

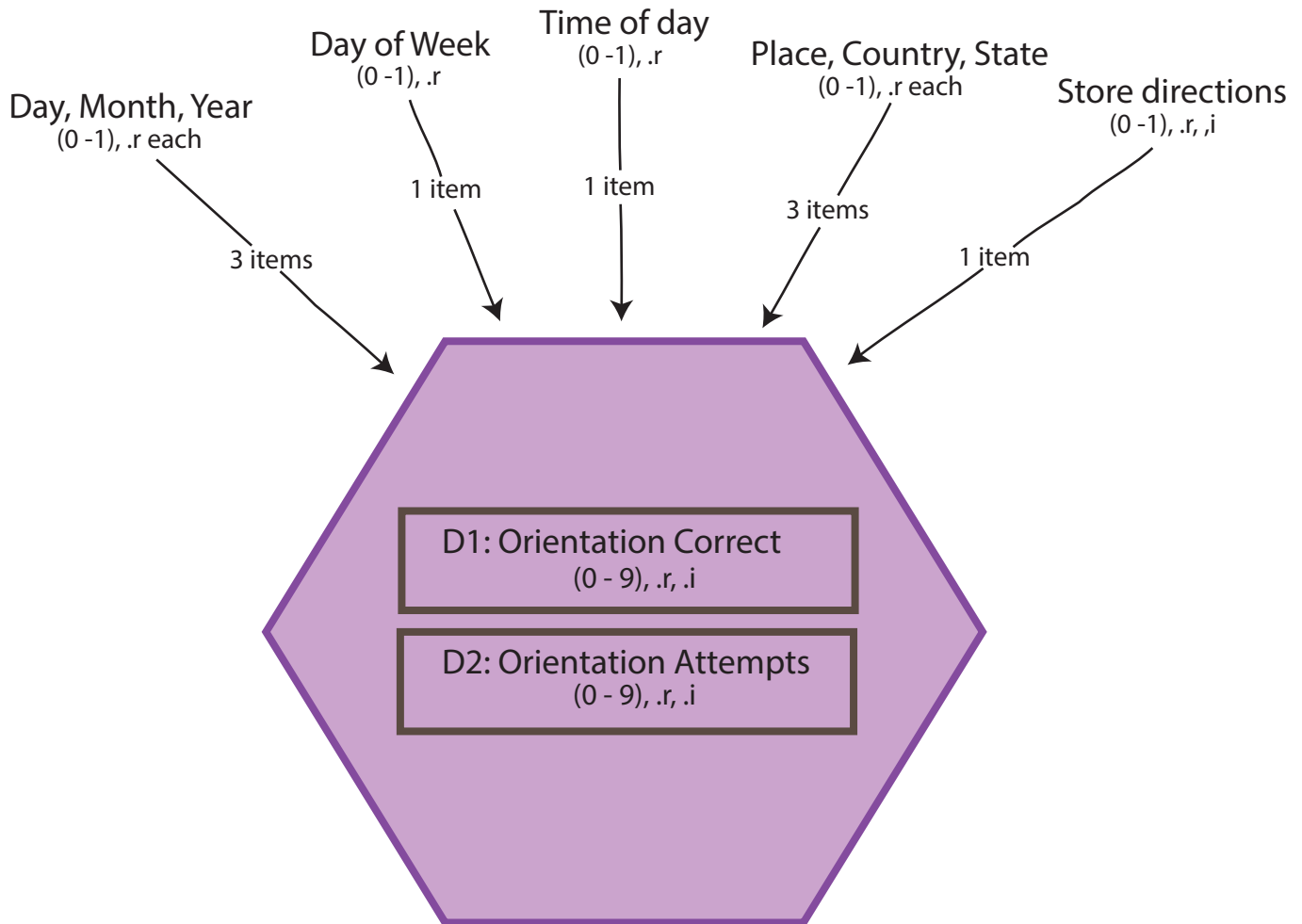
Mex-Cog 2016 Flowcharts for Scoring and Constructed Variables by Domain

Version 3

Last updated: August 2020

1. ORIENTATION

n = 2,042

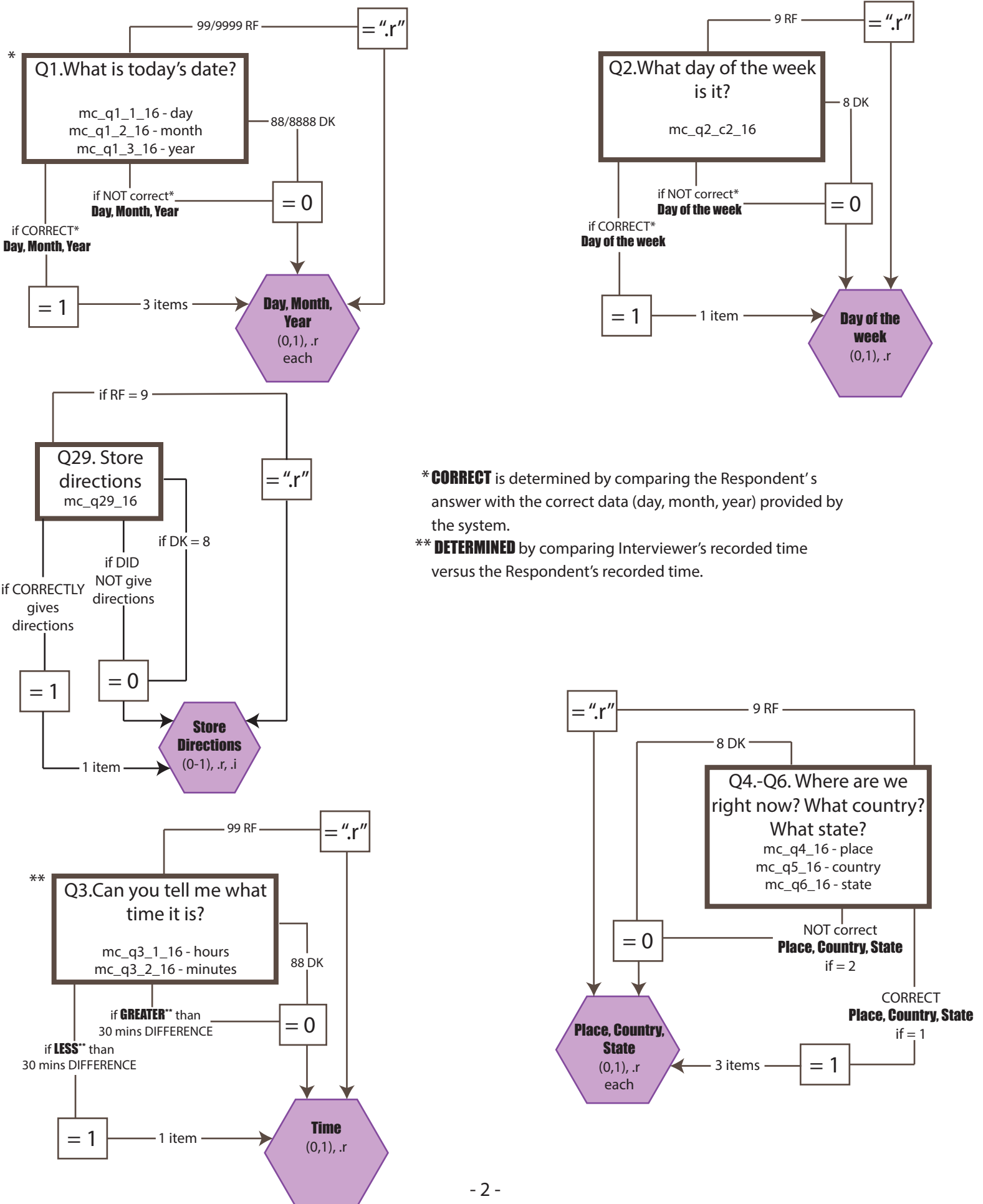


Correct = $\begin{cases} \text{Sum (correct out of 9 points if } \neq .r, .i) \\ .r \text{ if all items are } .r \\ .i \text{ if all items are } .i \end{cases}$

Attempts = $\begin{cases} \text{Sum (maximum out of 9 points if } \neq .r, .i) \\ .r \text{ if all items are } .r \\ .i \text{ if all items are } .i \end{cases}$

D1. ORIENTATION SCORE FLOW CHART

n = 2,042

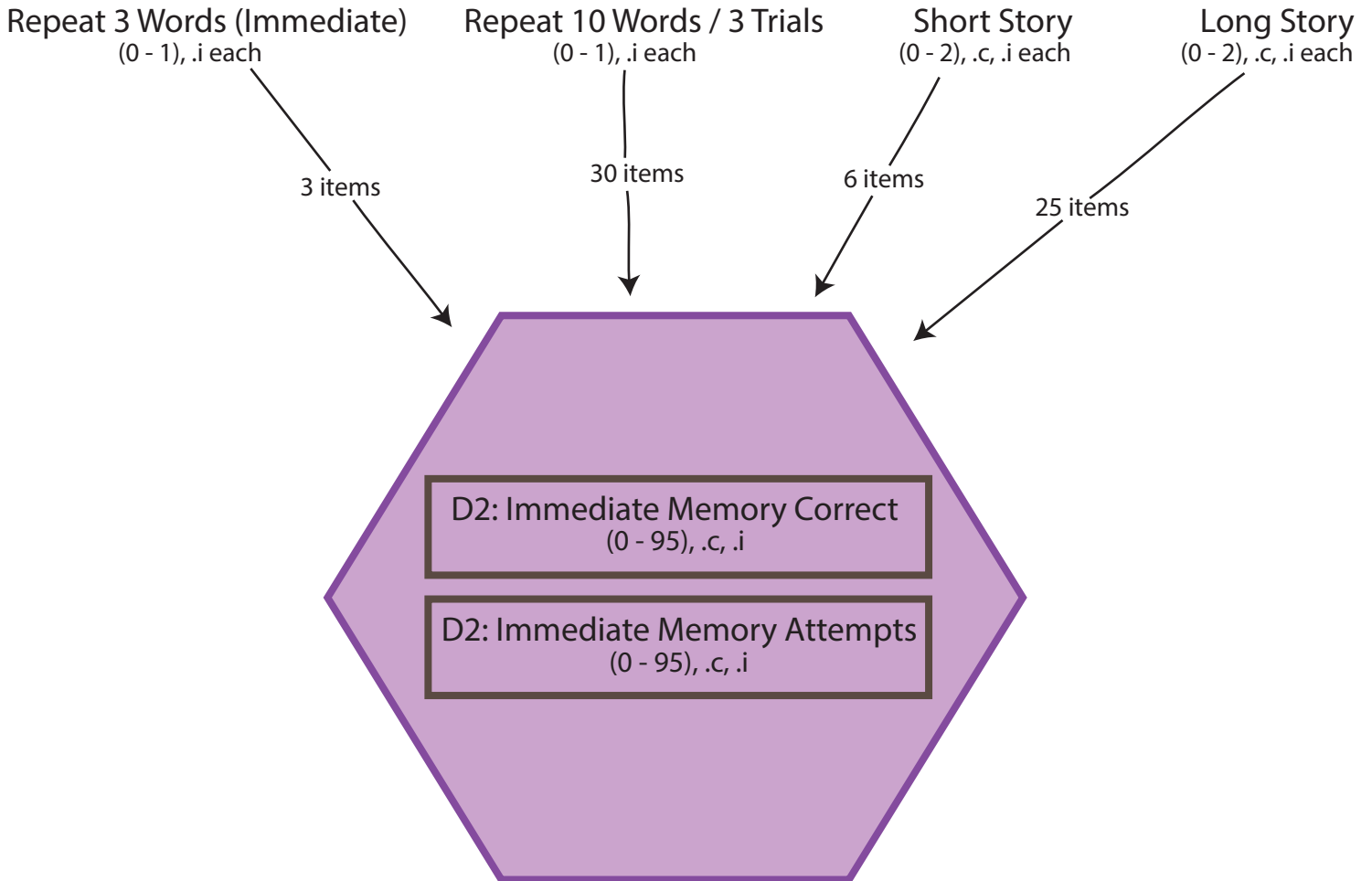


* **CORRECT** is determined by comparing the Respondent's answer with the correct data (day, month, year) provided by the system.

** **DETERMINED** by comparing Interviewer's recorded time versus the Respondent's recorded time.

2. IMMEDIATE MEMORY

n = 2,042

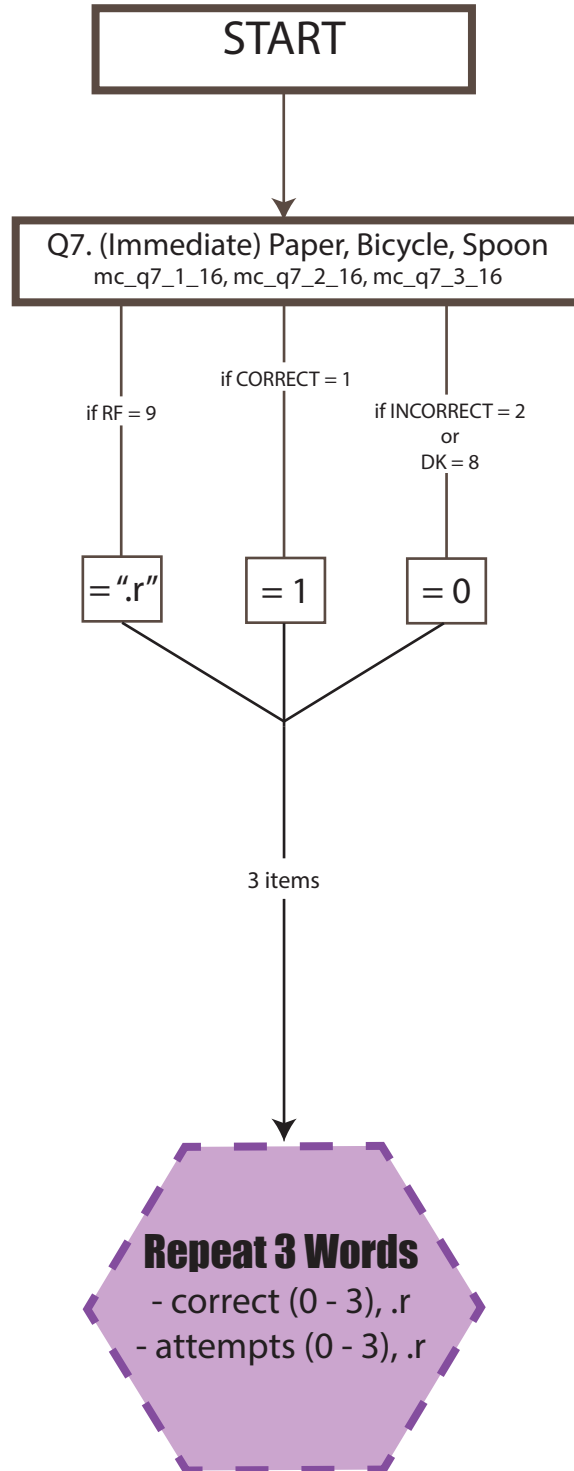


Correct = $\left\{ \begin{array}{l} \text{Sum (correct out of 95 points if } \neq .c, .i) \\ .c \text{ if all items are } .c \\ .i \text{ if all items are } .i \end{array} \right.$

Attempts = $\left\{ \begin{array}{l} \text{Sum (maximum out of 95 points if } \neq .c, .i) \\ .c \text{ if all items are } .c \\ .i \text{ if all items are } .i \end{array} \right.$

D2.1 REPEAT 3 WORDS SCORE FLOW CHART

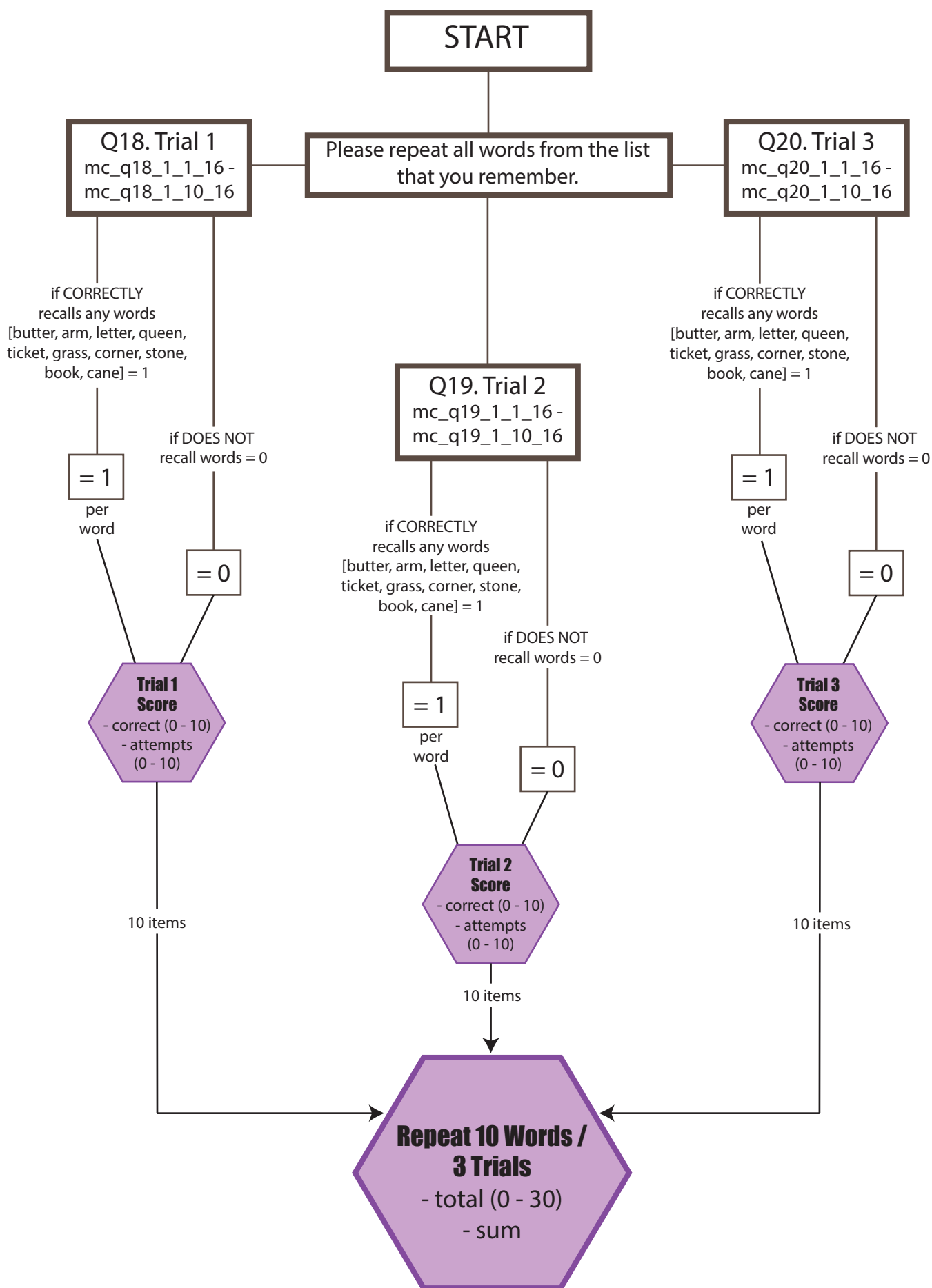
n = 2,042



NOTE: Dashed border means sentence / words are different from H_CAP

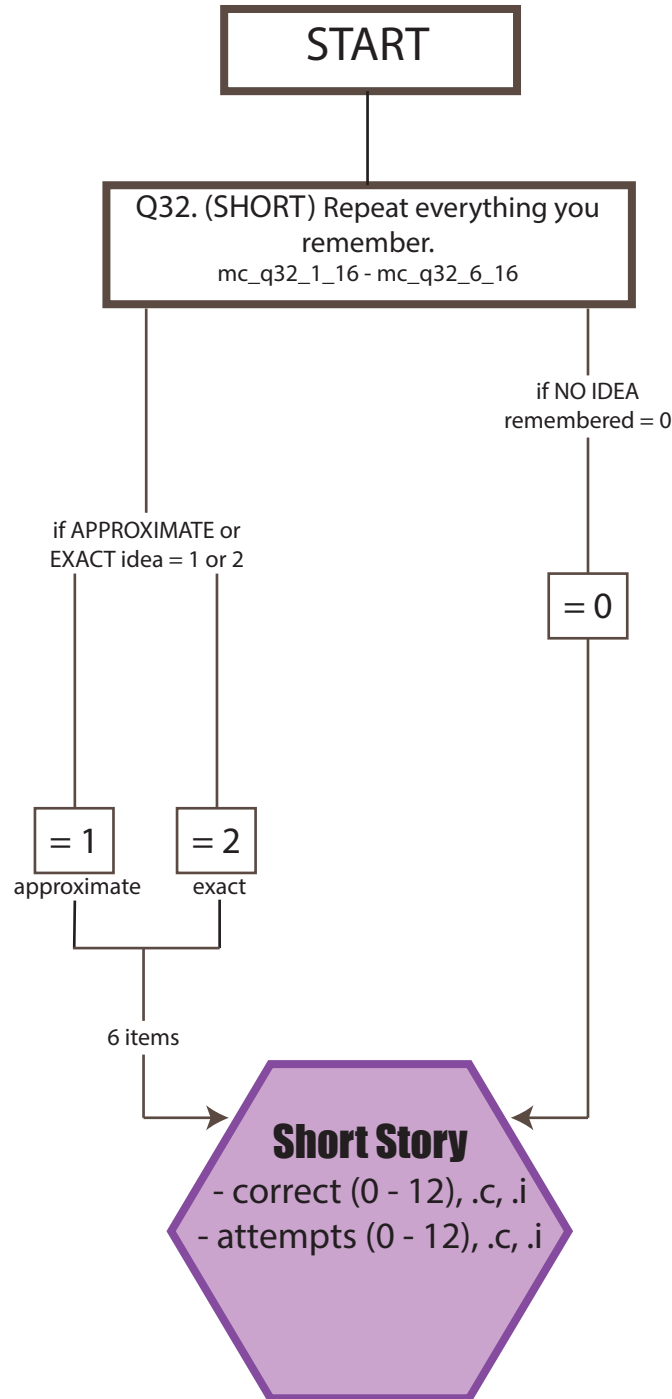
D2.2 REPEAT 10 WORDS / 3 TRIALS SCORE FLOW CHART

n = 2,039



D2.3 IMMEDIATE RECALL OF SHORT STORY SCORE FLOW CHART

n = 1,923



NOTE:

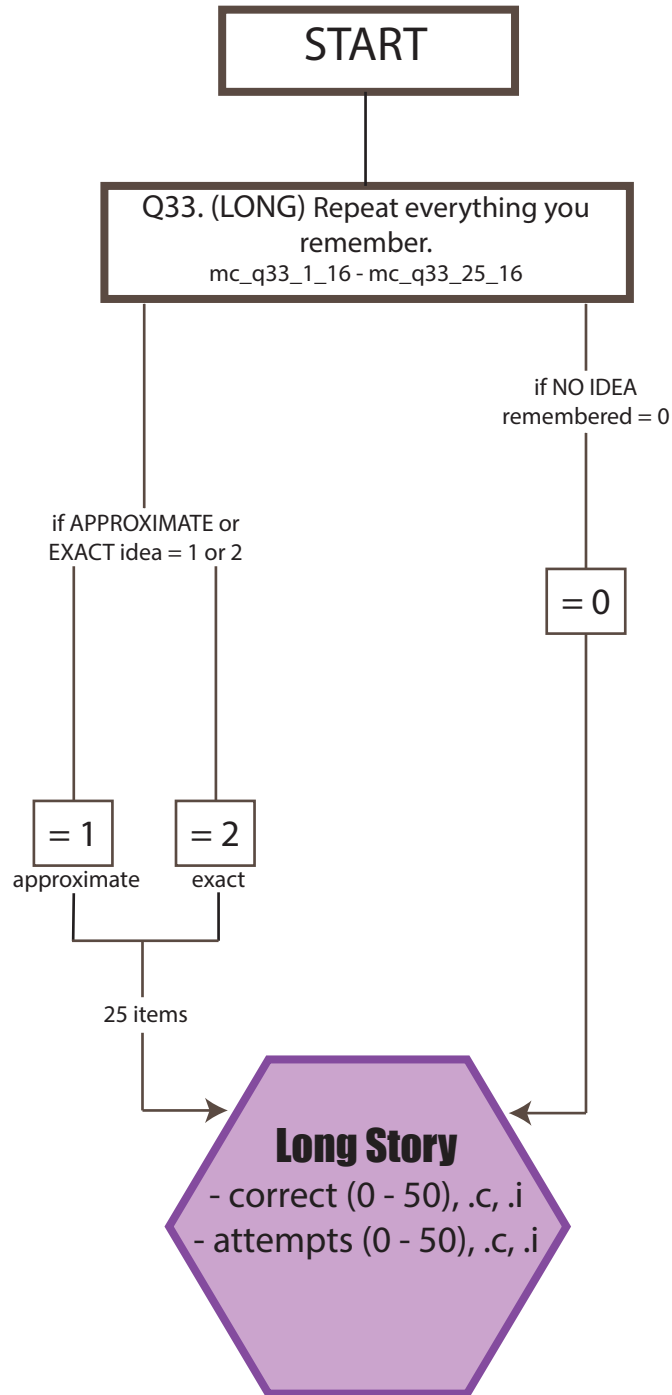
Two other variables were created to reflect scores as follows:

D2_t3_2 → 1 if exact or approximate, 0 if NO IDEA remembered

D2_t3_3 → 1 if exact, 0 if approximate or NO IDEA remembered

D2.4 IMMEDIATE RECALL OF LONG STORY SCORE FLOW CHART

n = 1,923



NOTE:

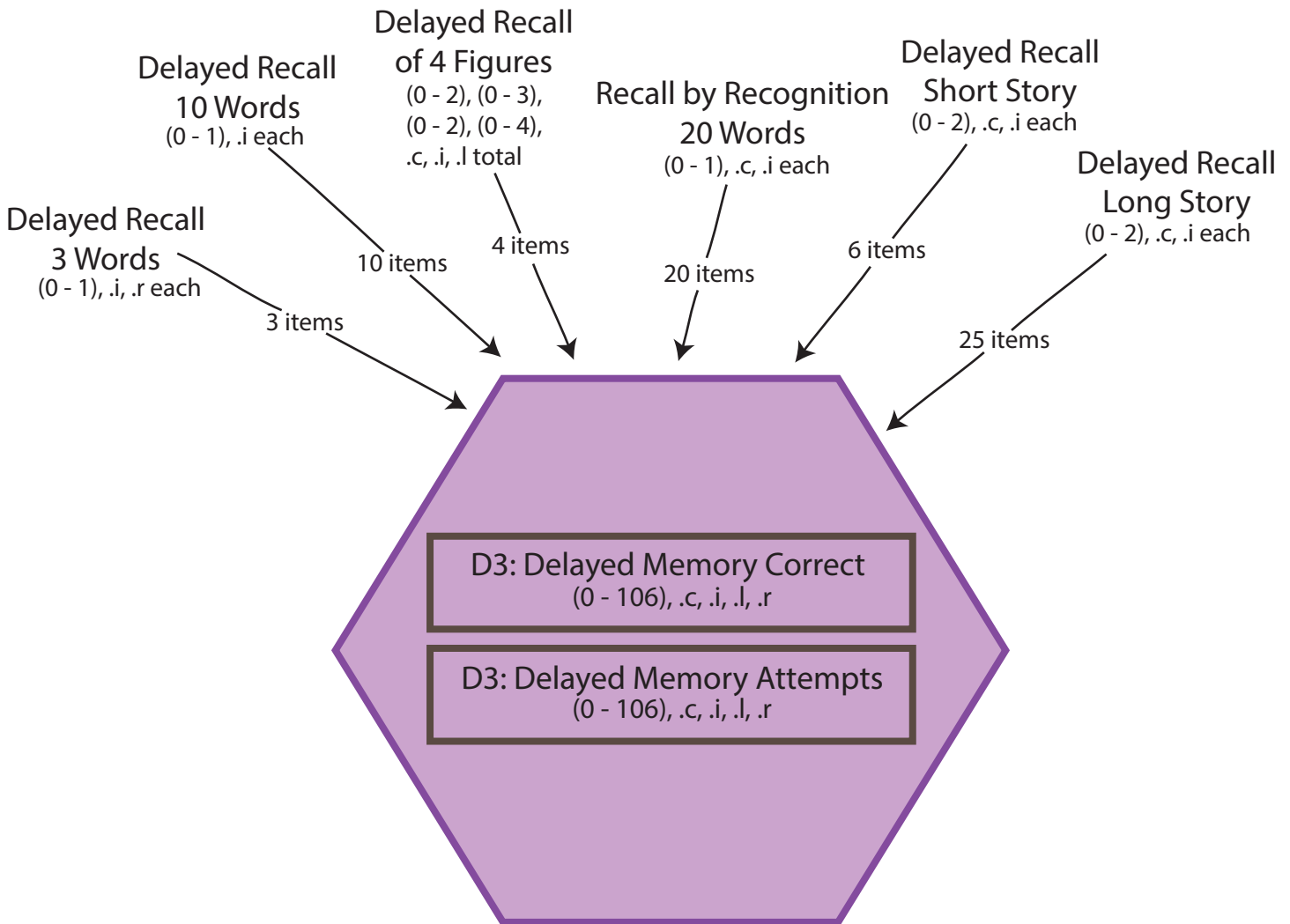
Two other variables were created to reflect scores as follows:

D2_t4_2 → 1 if exact or approximate, 0 if NO IDEA remembered

D2_t4_3 → 1 if exact, 0 if approximate or NO IDEA remembered

3. DELAYED MEMORY

n = 2,042

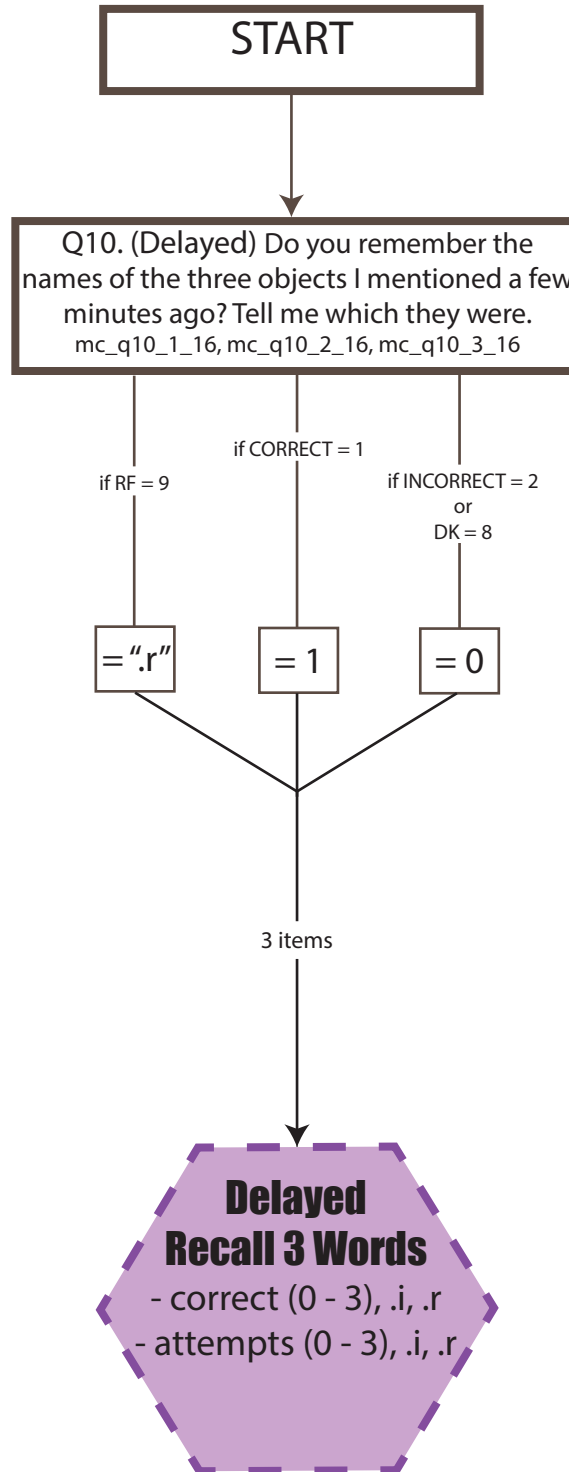


Correct = $\left\{ \begin{array}{l} \text{Sum (correct out of 106 points if } \neq .c, .i, .l, .r) \\ .c \text{ if all items are } .c \quad .l \text{ if all items are } .l \\ .i \text{ if all items are } .i \quad .r \text{ if all items are } .r \end{array} \right.$

Attempts = $\left\{ \begin{array}{l} \text{Sum (maximum out of 106 points if } \neq .c, .i, .l, .r) \\ .c \text{ if all items are } .c \quad .l \text{ if all items are } .l \\ .i \text{ if all items are } .i \quad .r \text{ if all items are } .r \end{array} \right.$

D3.1 DELAYED RECALL OF 3 WORDS SCORE FLOW CHART

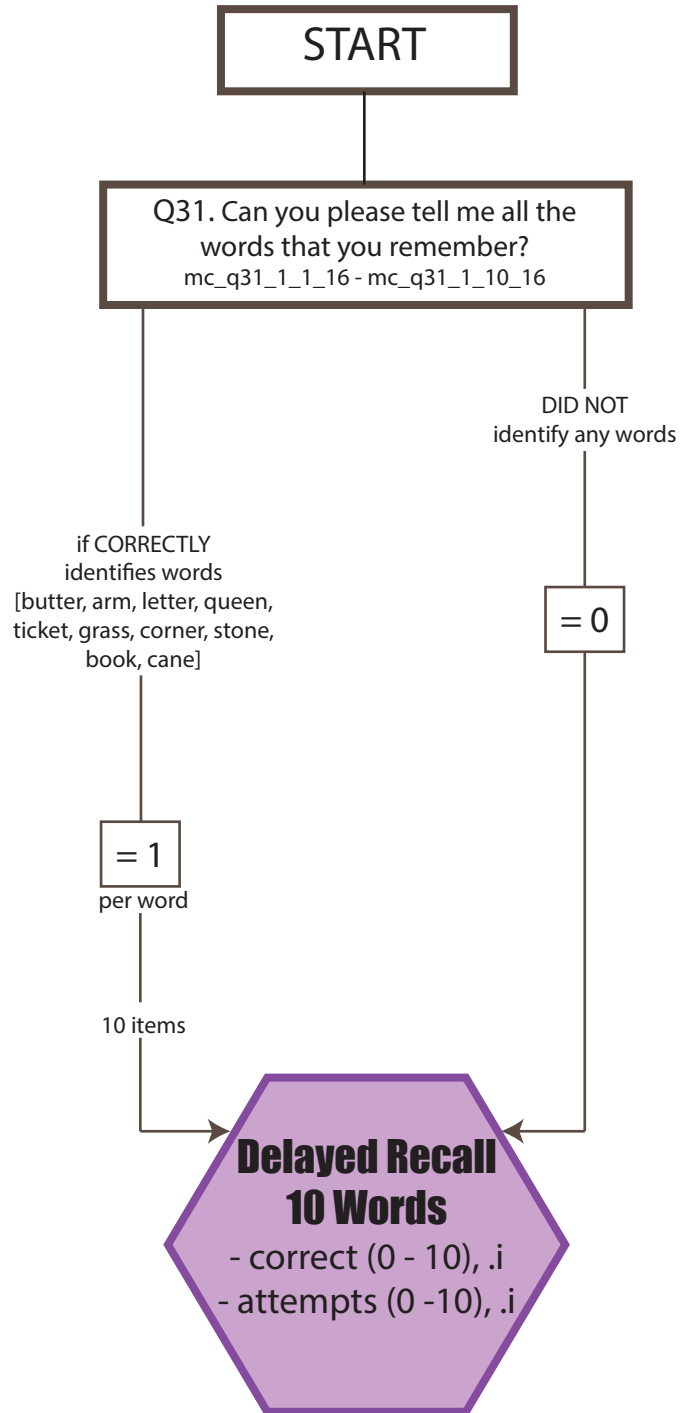
n = 2,042



NOTE: Dashed border means sentence / words are different from H_CAP

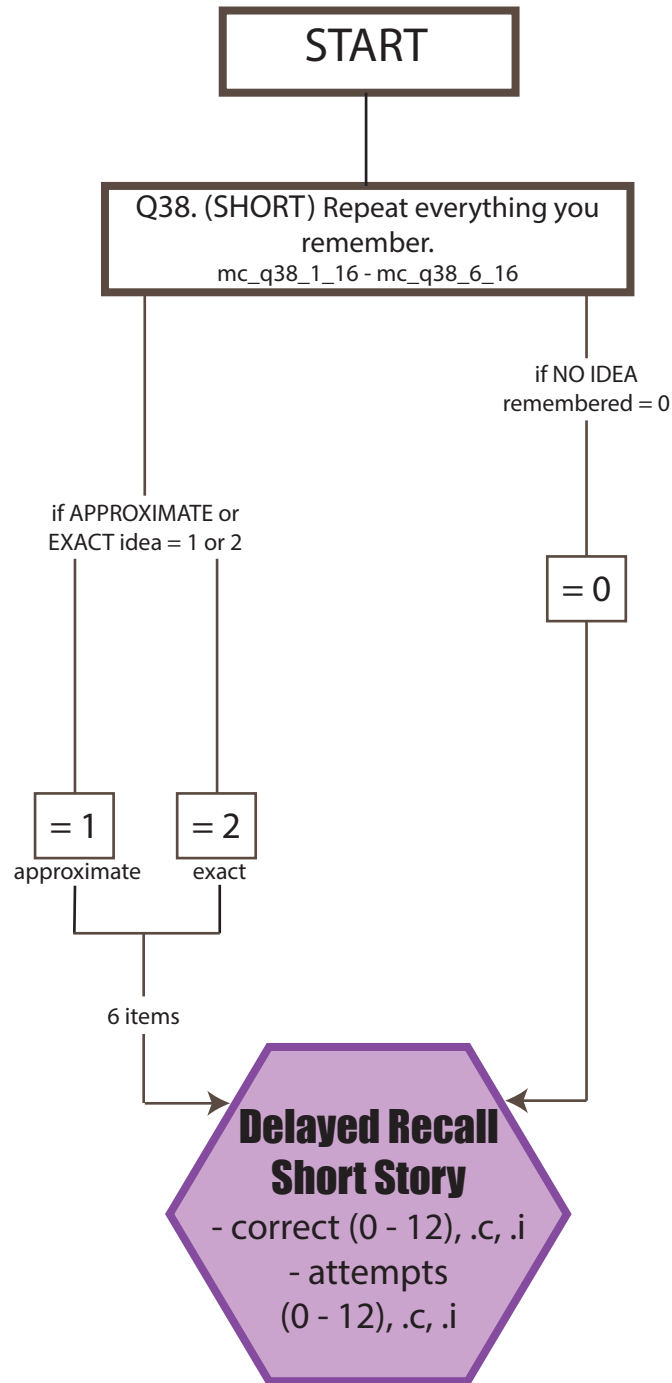
D3.2 DELAYED RECALL OF 10 WORDS SCORE FLOW CHART

n = 2,039



D3.3 DELAYED RECALL OF SHORT STORY SCORE FLOW CHART

n = 1,922



NOTE:

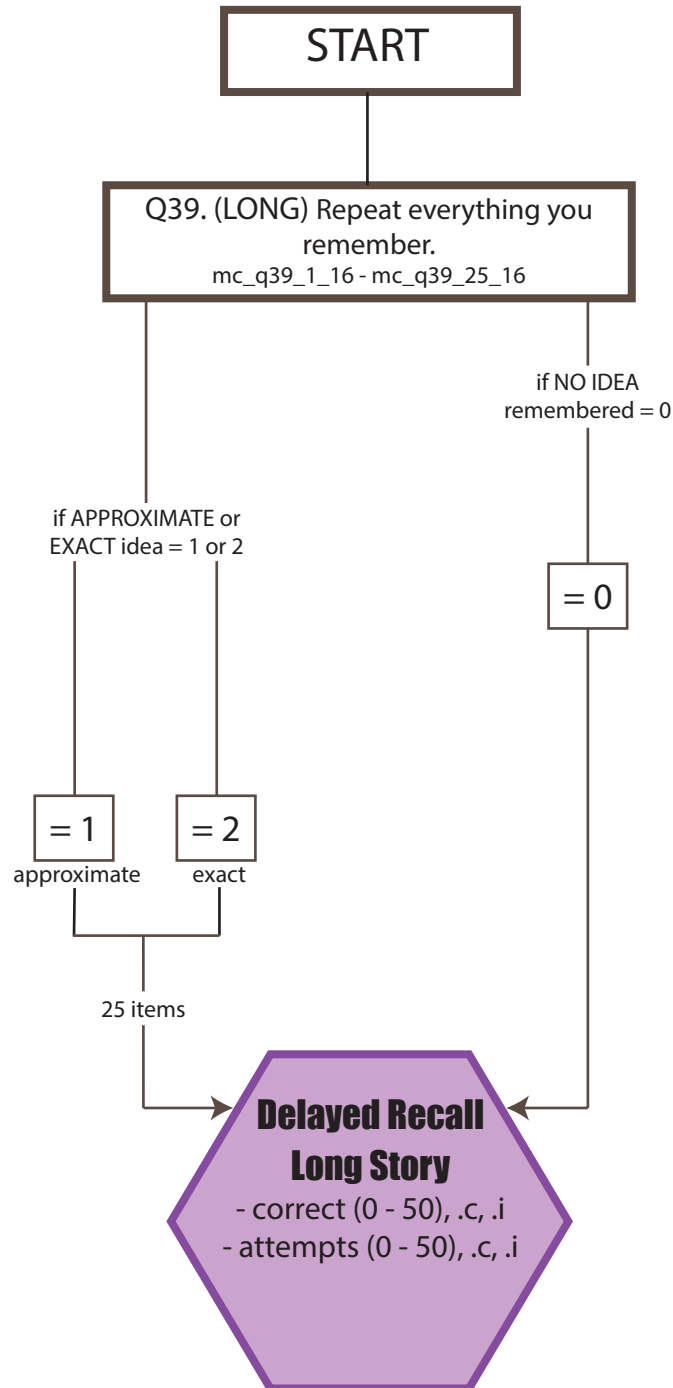
Two other variables were created to reflect scores as follows:

D3_t3_2 → 1 if exact or approximate, 0 if NO IDEA remembered

D3_t3_3 → 1 if exact, 0 if approximate or NO IDEA remembered

D3.4 DELAYED RECALL OF LONG STORY SCORE FLOW CHART

n = 1,922



NOTE:

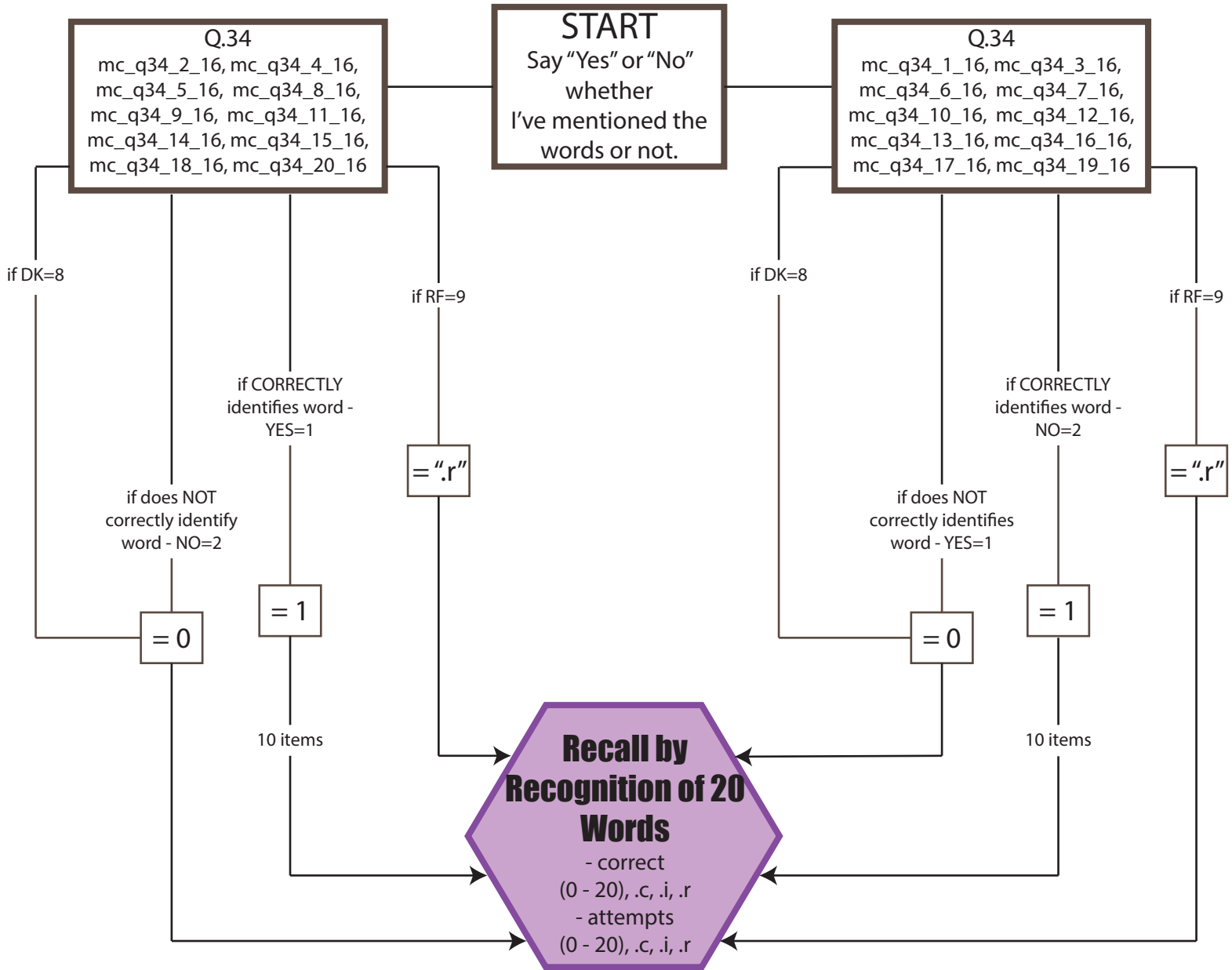
Two other variables were created to reflect scores as follows:

D3_t4_2 → 1 if exact or approximate, 0 if NO IDEA remembered

D3_t4_3 → 1 if exact, 0 if approximate or NO IDEA remembered

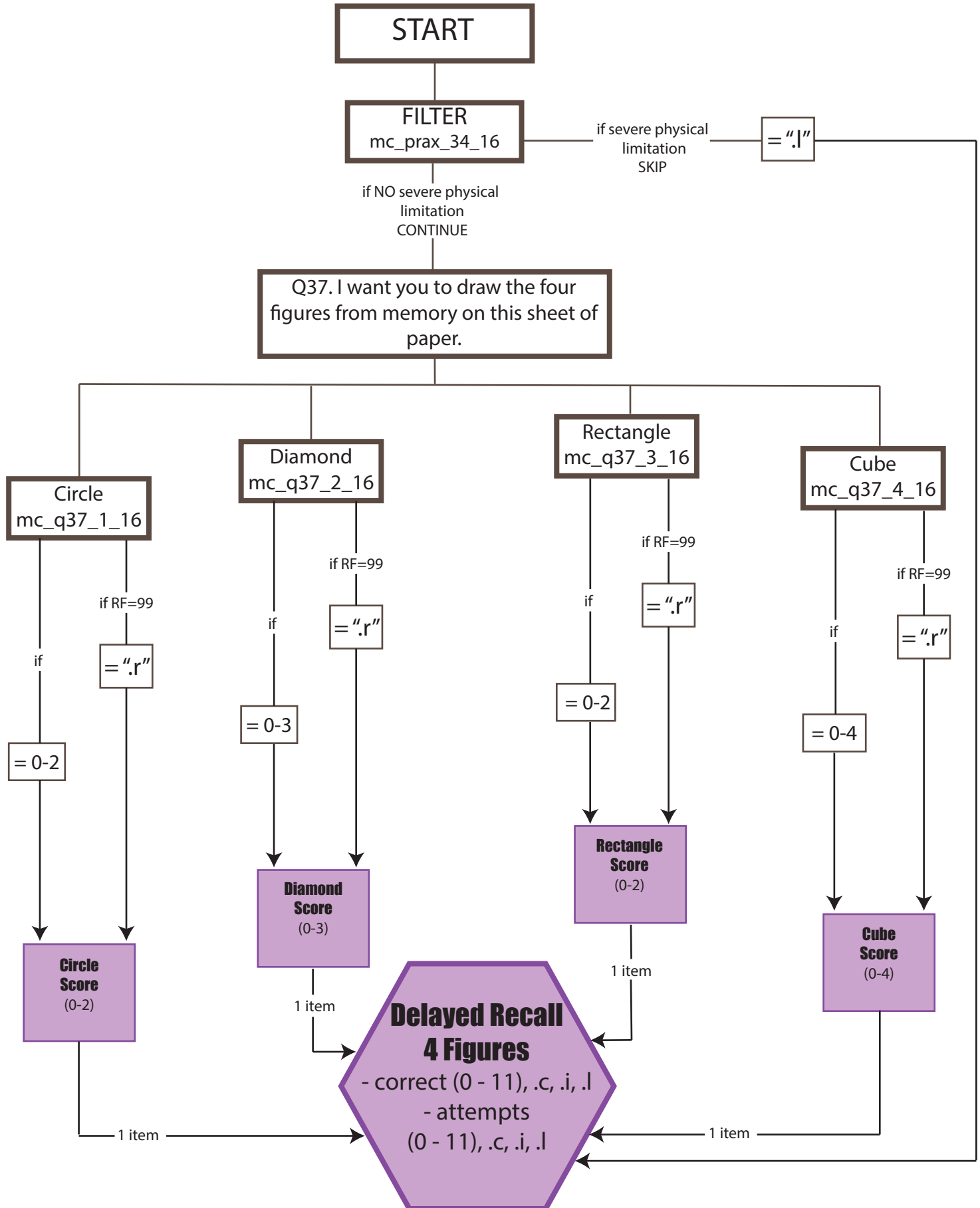
D3.5 RECALL BY RECOGNITION OF 20 WORDS SCORE FLOW CHART

n = 1,922



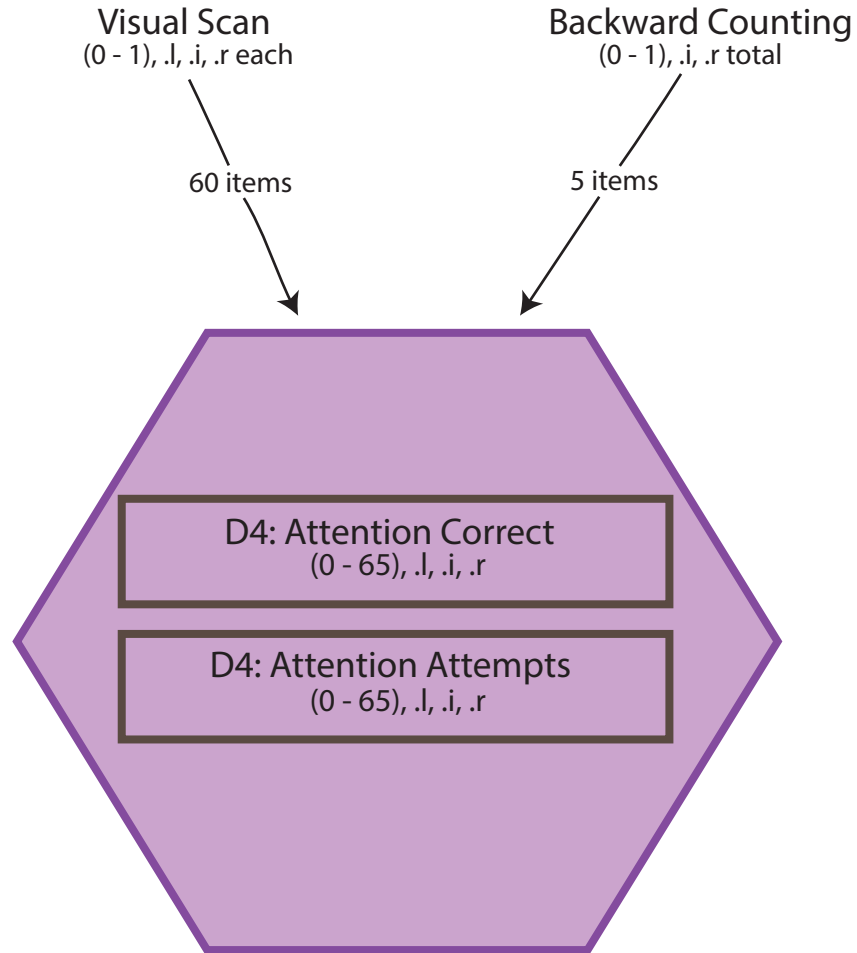
D3.6 DELAYED RECALL OF 4 FIGURES SCORE FLOW CHART

n = 1,869



4. ATTENTION

n = 2,042

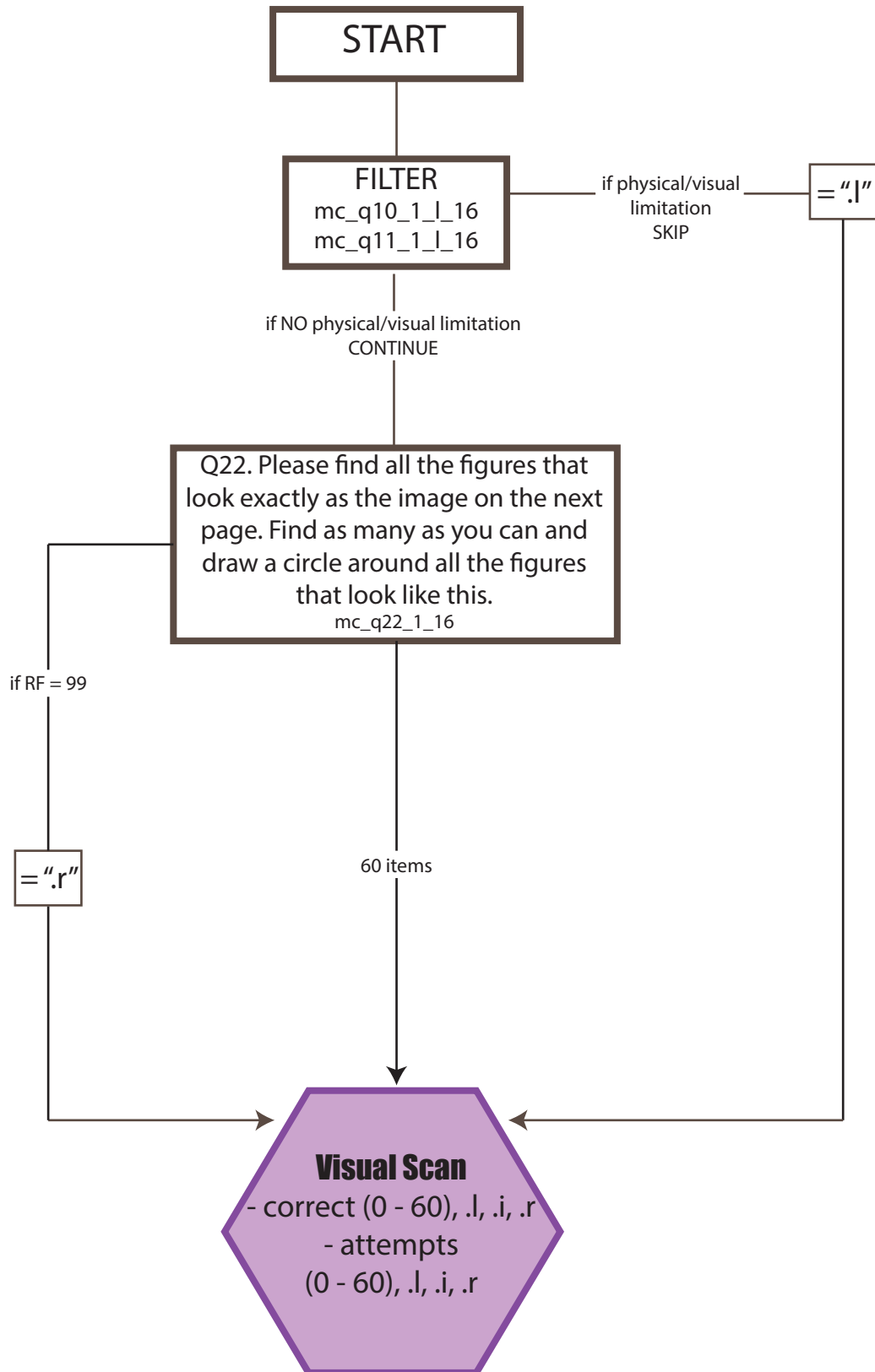


Correct = $\left\{ \begin{array}{l} \text{Sum (correct out of 65 points if } \neq .l, .i, .r) \\ .l \text{ if all items are } .l \quad .r \text{ if all items are } .r \\ .i \text{ if all items are } .i \end{array} \right.$

Attempts = $\left\{ \begin{array}{l} \text{Sum (maximum out of 65 points if } \neq .l, .i, .r) \\ .l \text{ if all items are } .l \quad .r \text{ if all items are } .r \\ .i \text{ if all items are } .i \end{array} \right.$

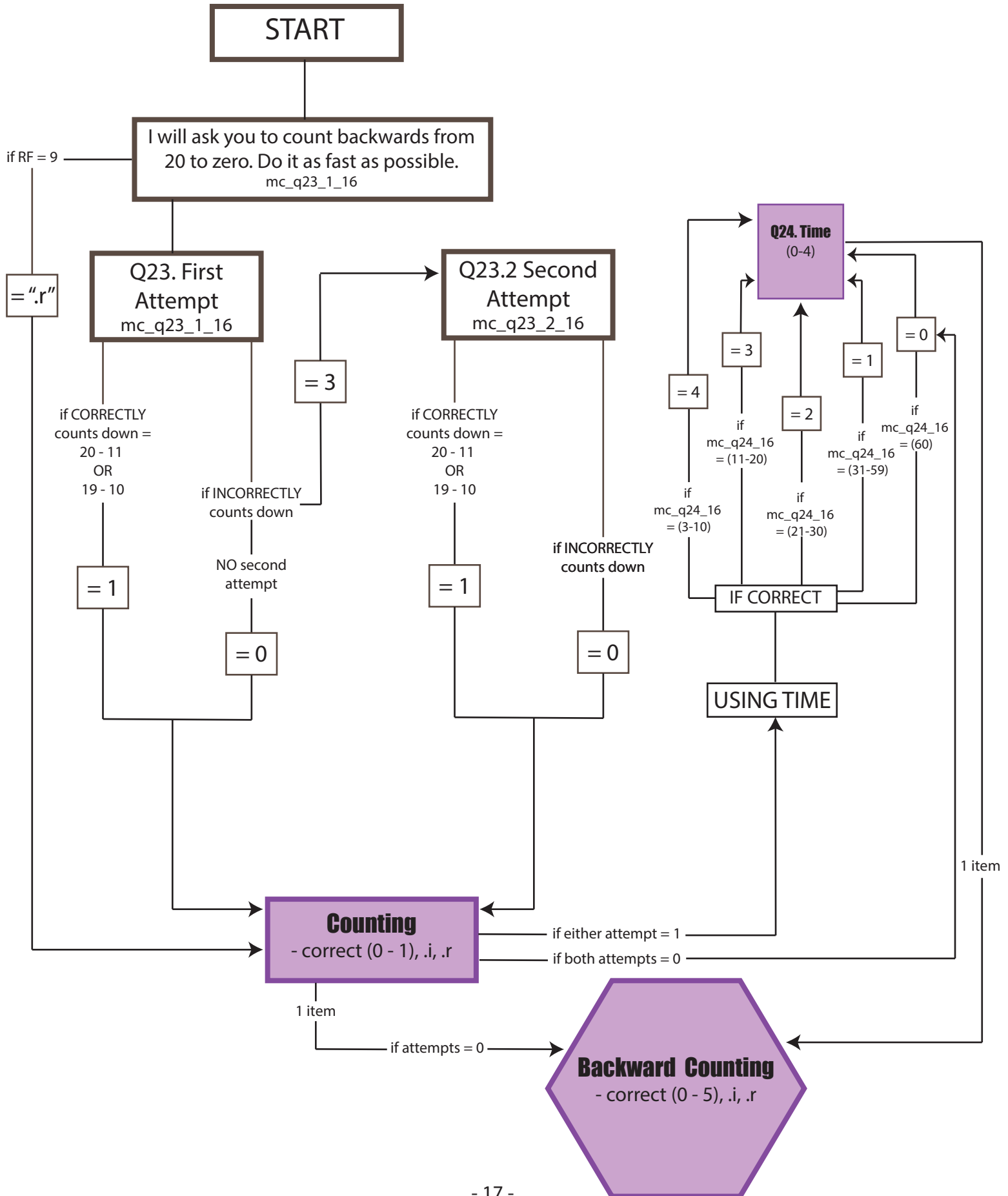
D4.1 VISUAL SCAN SCORE FLOW CHART

n = 2,039



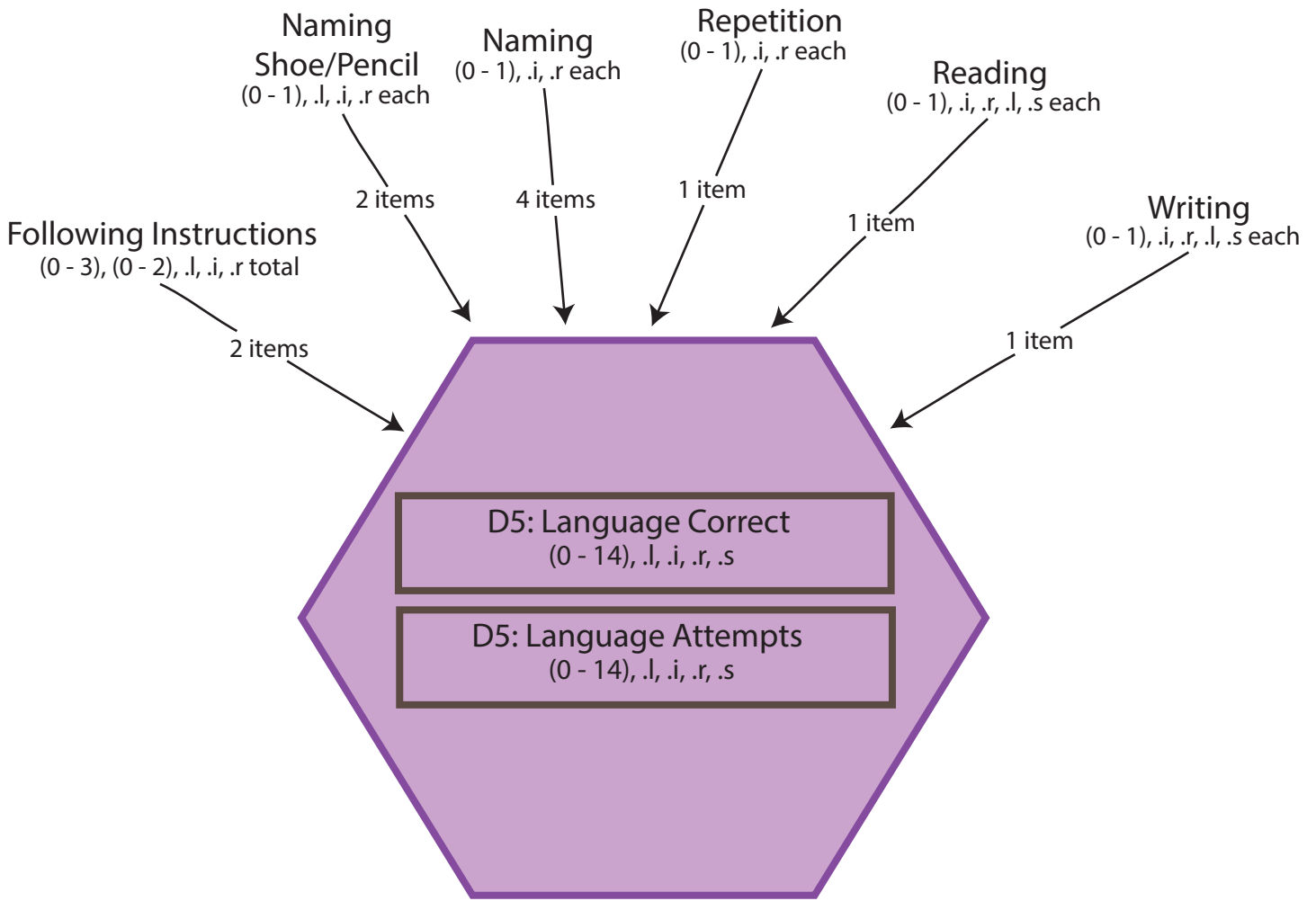
D4.2 BACKWARD COUNTING SCORE FLOW CHART

n = 2,039



5. LANGUAGE

n = 2,042

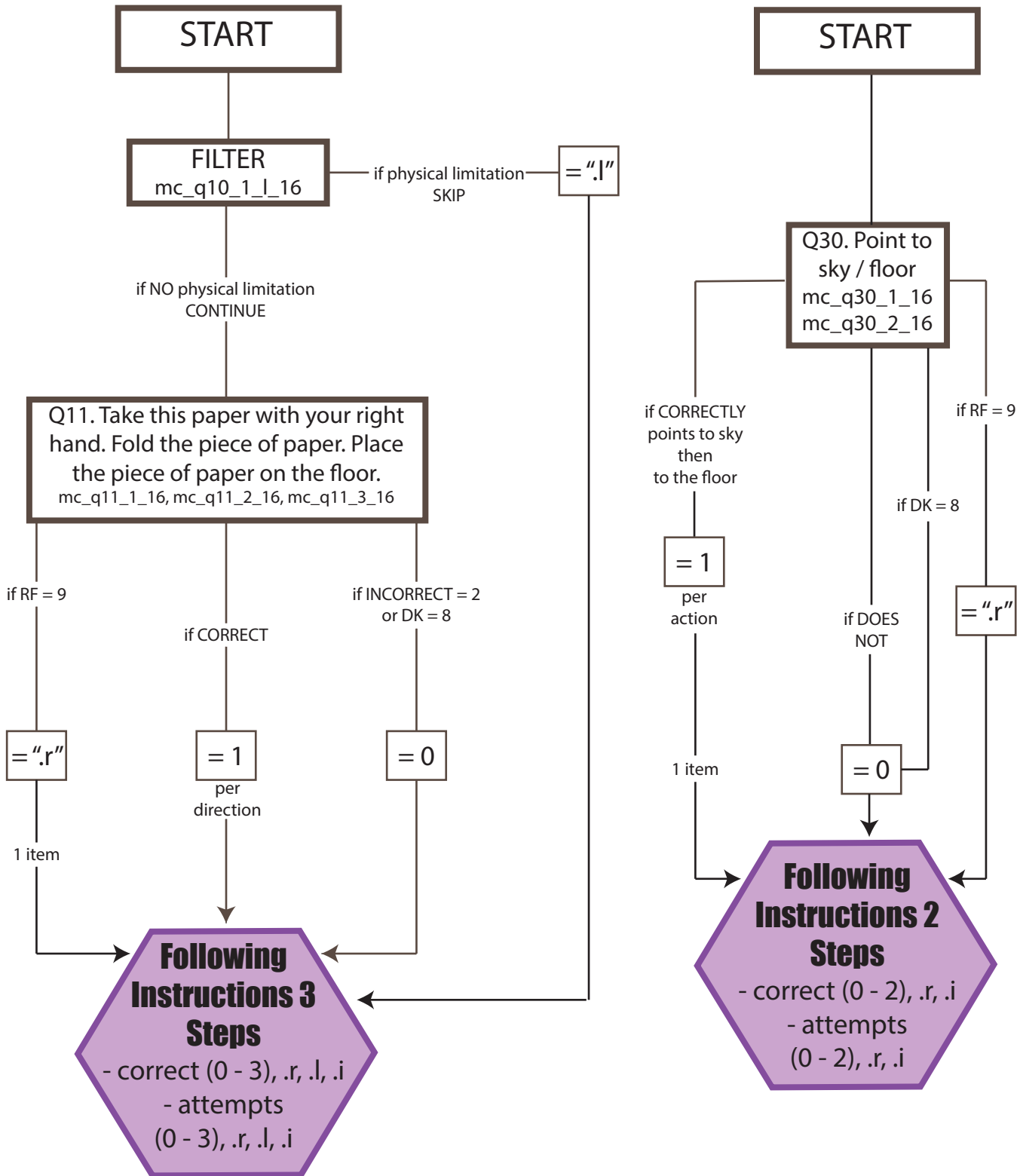


$$\text{Correct} = \begin{cases} \text{Sum (correct out of 14 points if } \neq .l, .i, .r, .s) \\ .l \text{ if all items are } .l & .r \text{ if all items are } .r \\ .i \text{ if all items are } .i & .s \text{ if all items are } .s \end{cases}$$

$$\text{Attempts} = \begin{cases} \text{Sum (maximum out of 14 points if } \neq .l, .i, .r, .s) \\ .l \text{ if all items are } .l & .r \text{ if all items are } .r \\ .i \text{ if all items are } .i & .s \text{ if all items are } .s \end{cases}$$

D5.1-2 FOLLOWING INSTRUCTIONS 3 STEPS/2 STEPS SCORE FLOW CHART

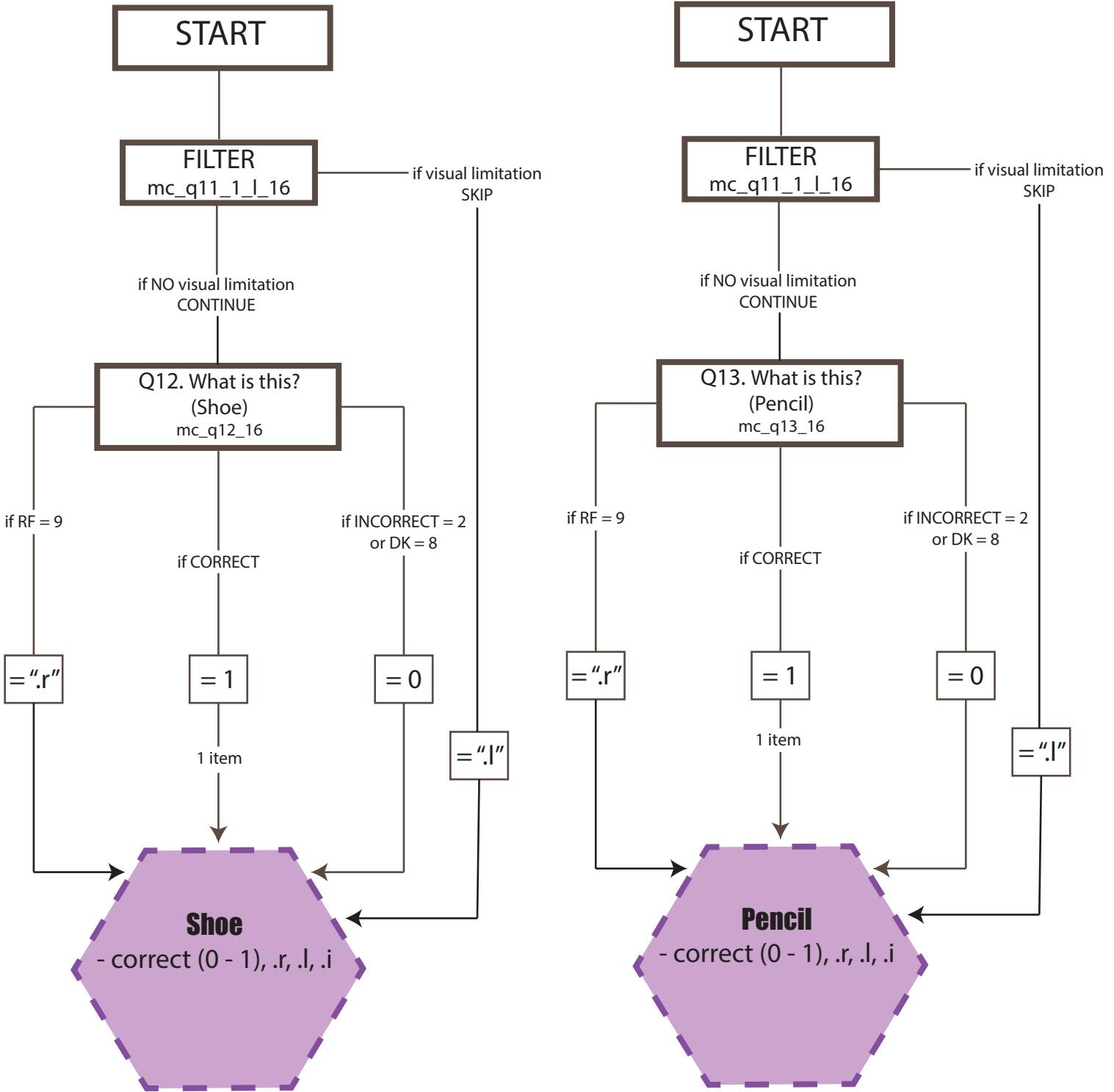
n = 2,042



NOTE: "!.l" if physical limitation, ".r" if ALL are ".r"

D5.3-4 NAMING SHOE/PENCIL SCORE FLOW CHART

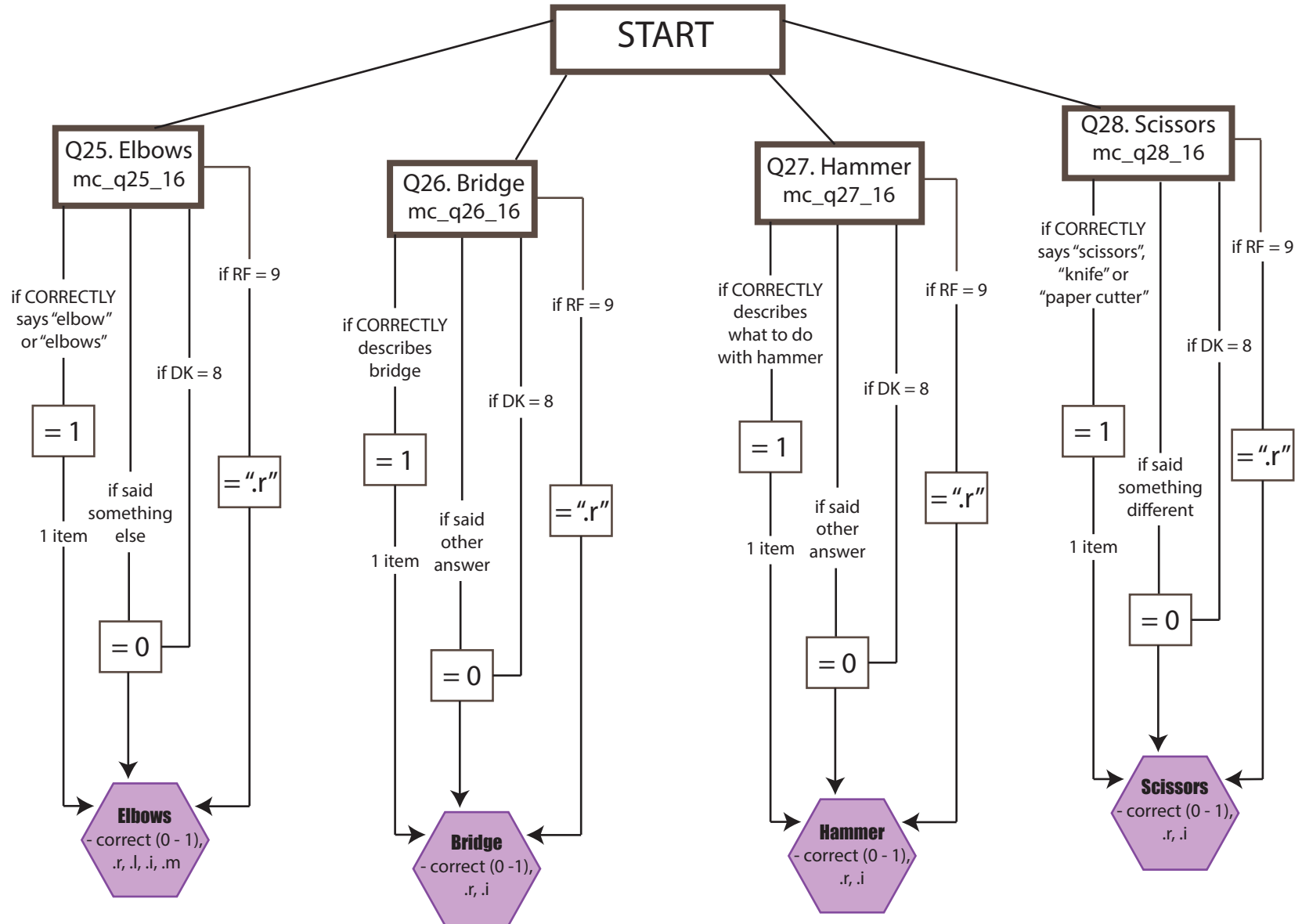
n = 2,042



NOTE: Dashed border means sentence / words are different from H_CAP

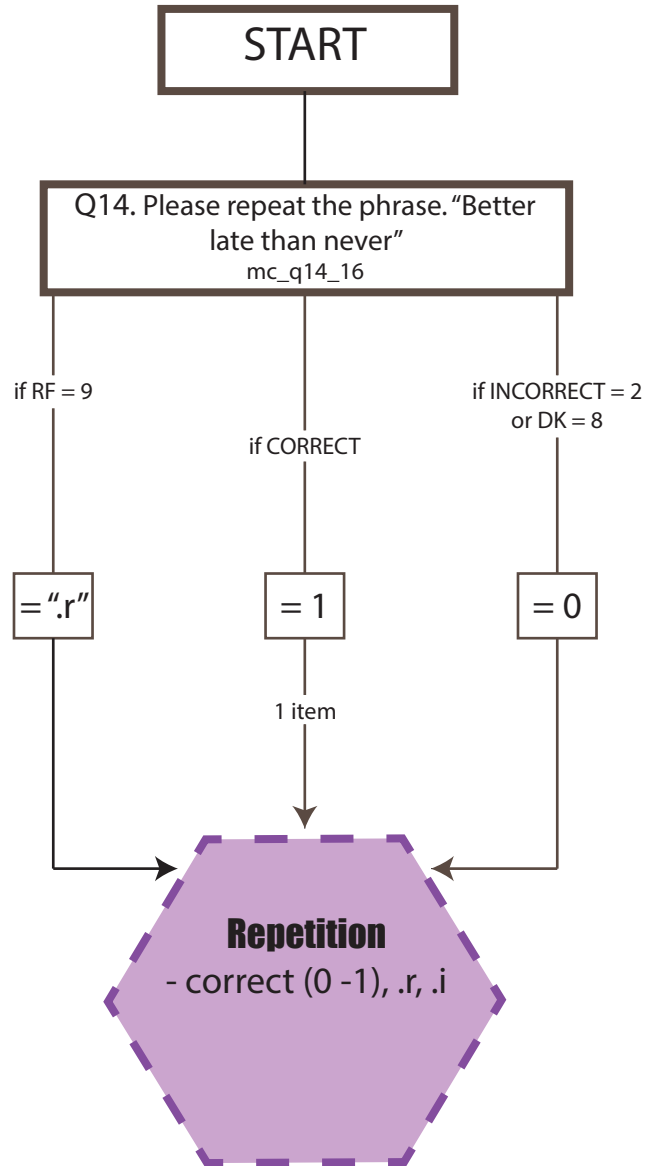
D5.5-8 NAMING (2) SCORE FLOW CHART

n = 1,974



D5.9 REPETITION SCORE FLOW CHART

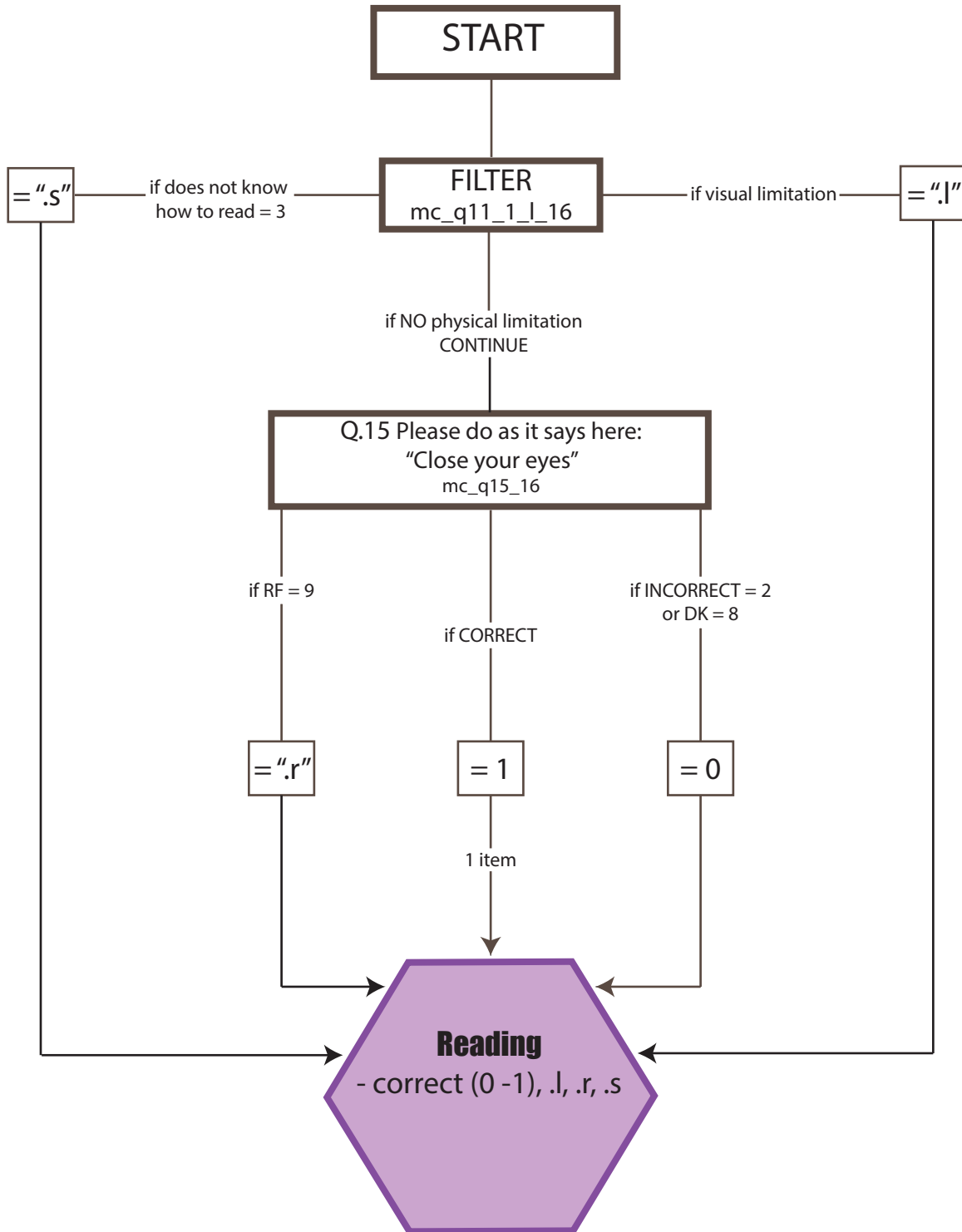
n = 2,042



NOTE: Dashed border means sentence / words are different from H_CAP

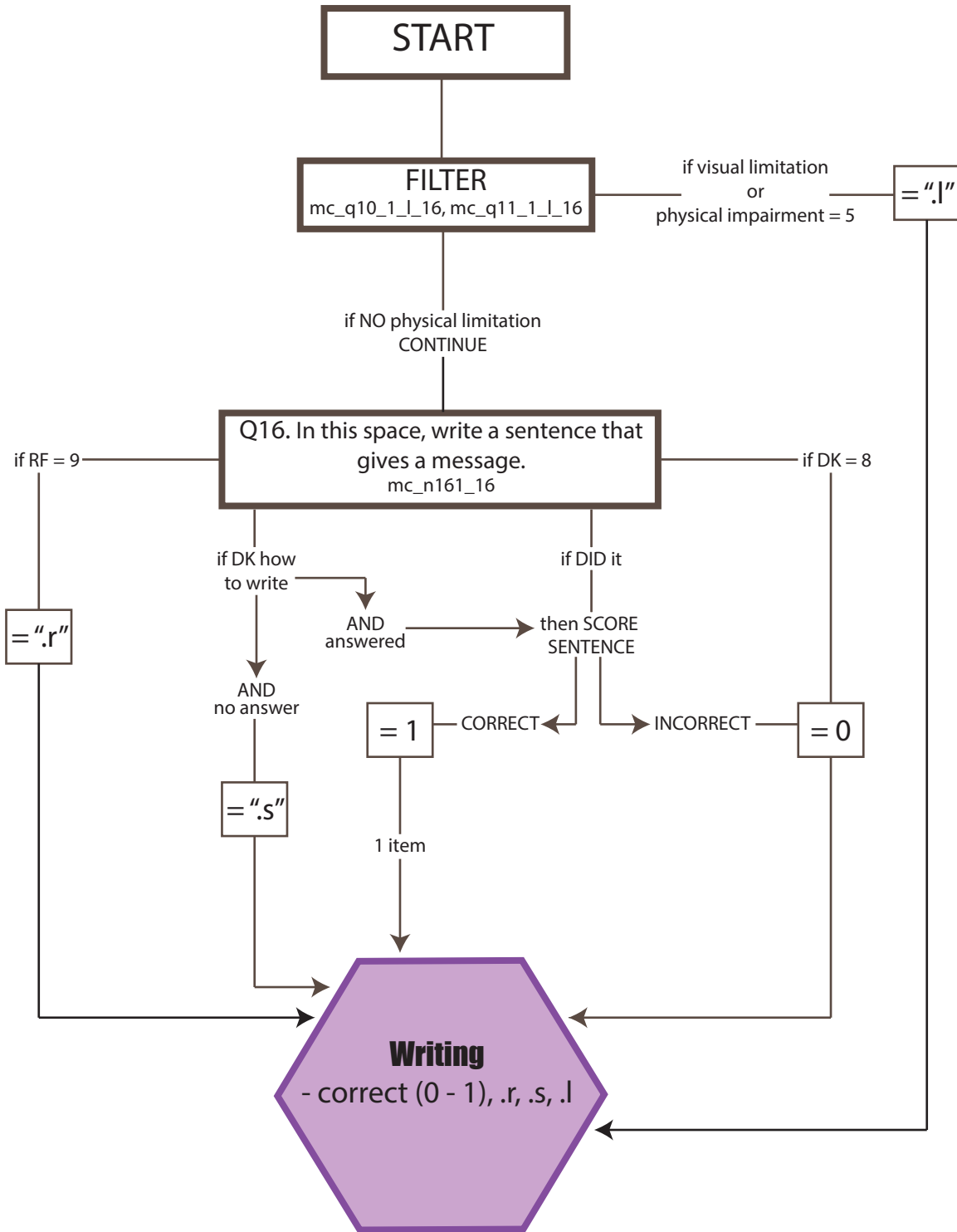
D5.10 READING SCORE FLOW CHART

n = 2,042



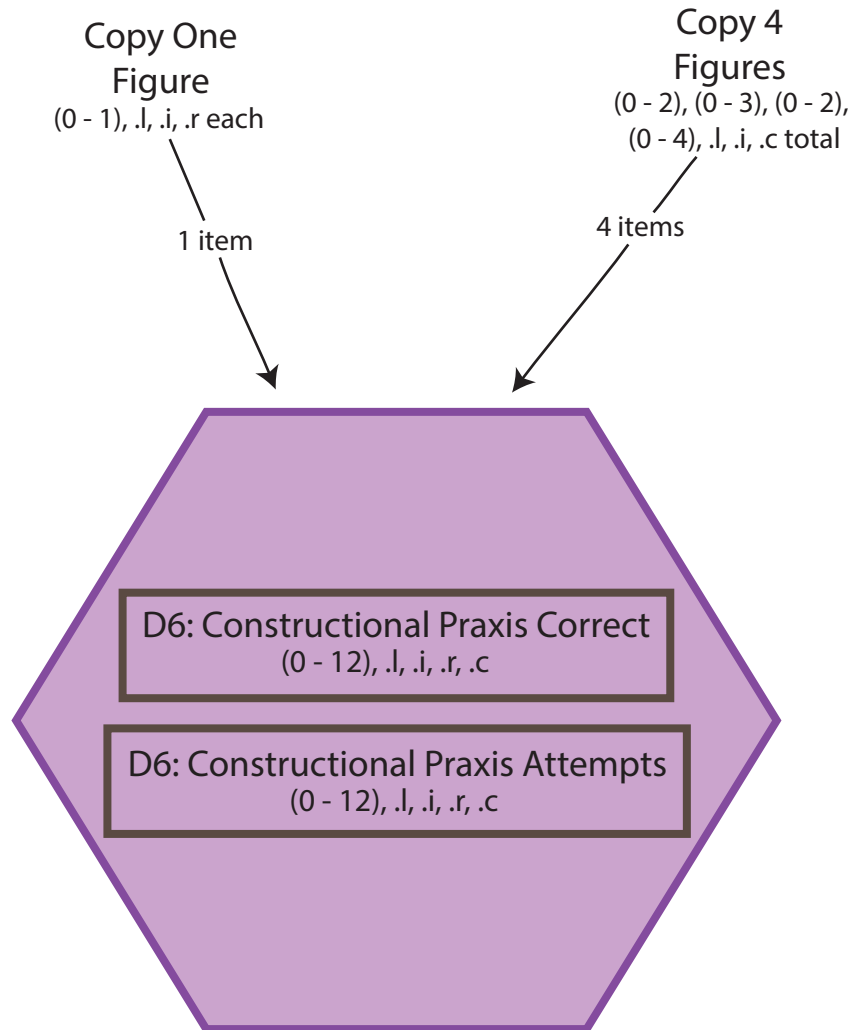
D5.11 WRITING SCORE FLOW CHART

n = 2,042



6. CONSTRUCTIONAL PRAXIS

n = 2,042

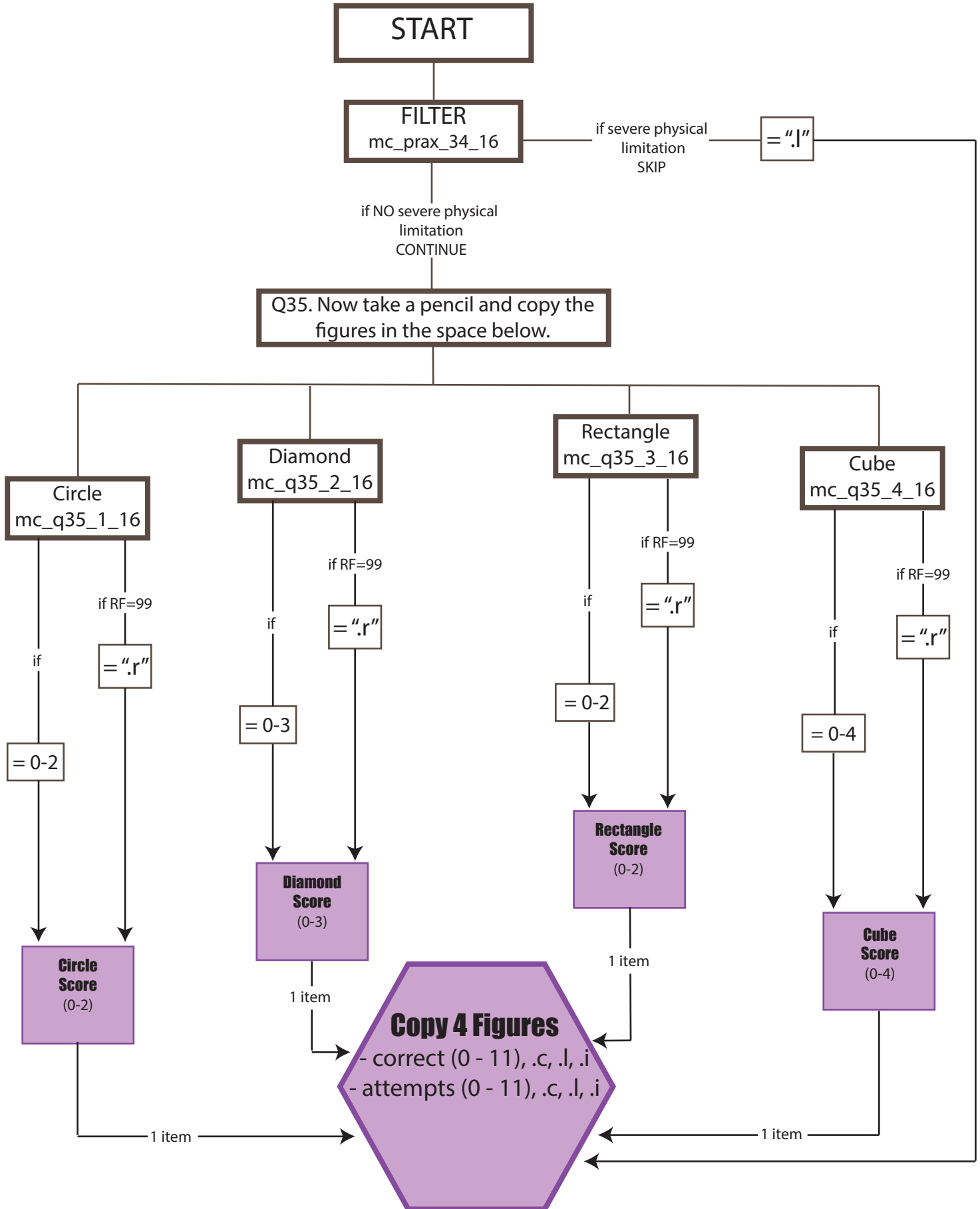


Correct = $\left\{ \begin{array}{l} \text{Sum (correct out of 12 points if } \neq .l, .i, .r, .c) \\ .l \text{ if all items are } .l \quad .r \text{ if all items are } .r \\ .i \text{ if all items are } .i \quad .c \text{ if all items are } .c \end{array} \right.$

Attempts = $\left\{ \begin{array}{l} \text{Sum (maximum out of 12 points if } \neq .l, .i, .r, .c) \\ .l \text{ if all items are } .l \quad .r \text{ if all items are } .r \\ .i \text{ if all items are } .i \quad .c \text{ if all items are } .c \end{array} \right.$

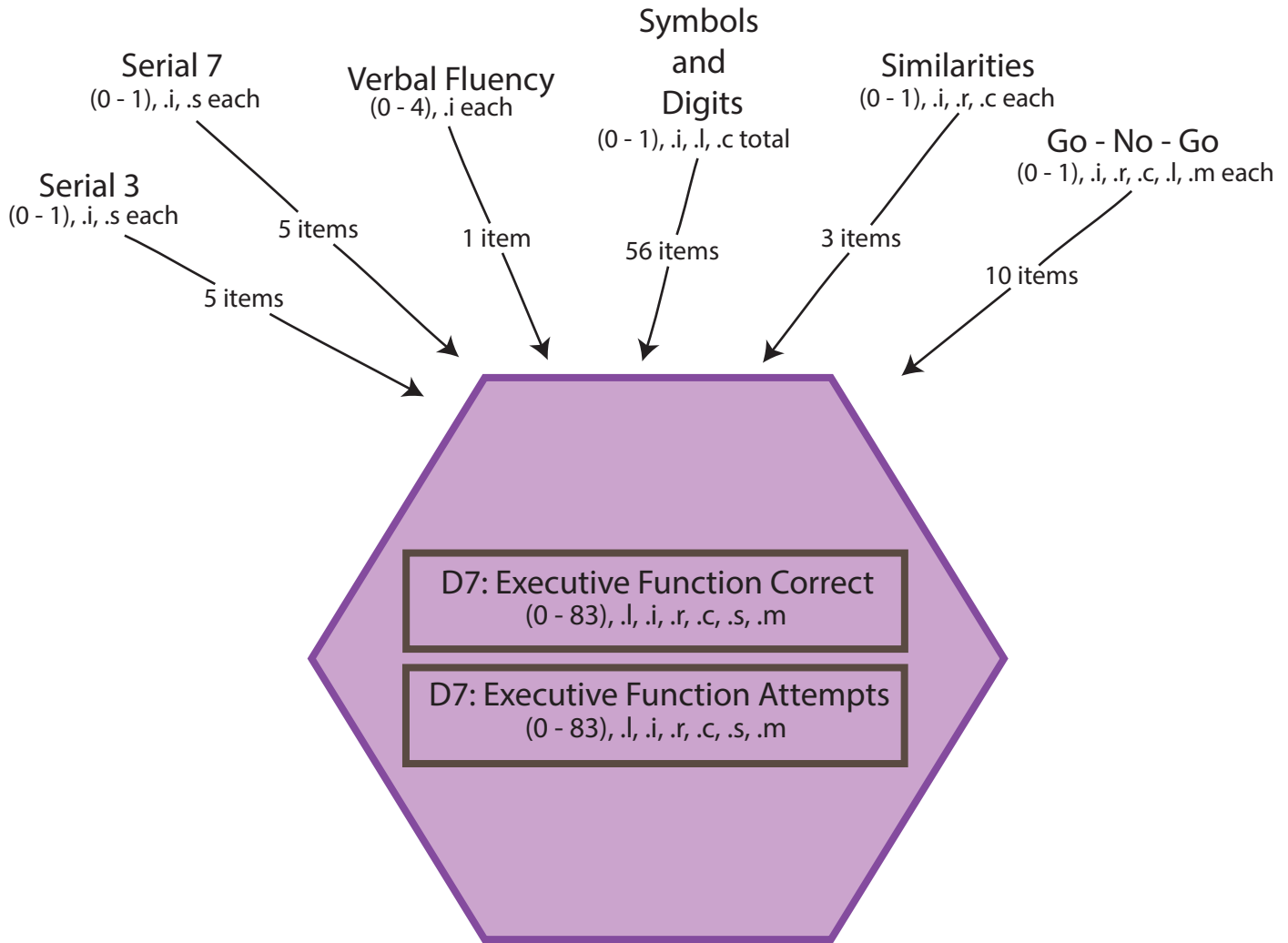
D6.2 COPY 4 FIGURES SCORE FLOW CHART

n = 1,878



7. EXECUTIVE FUNCTIONS

n = 2,042

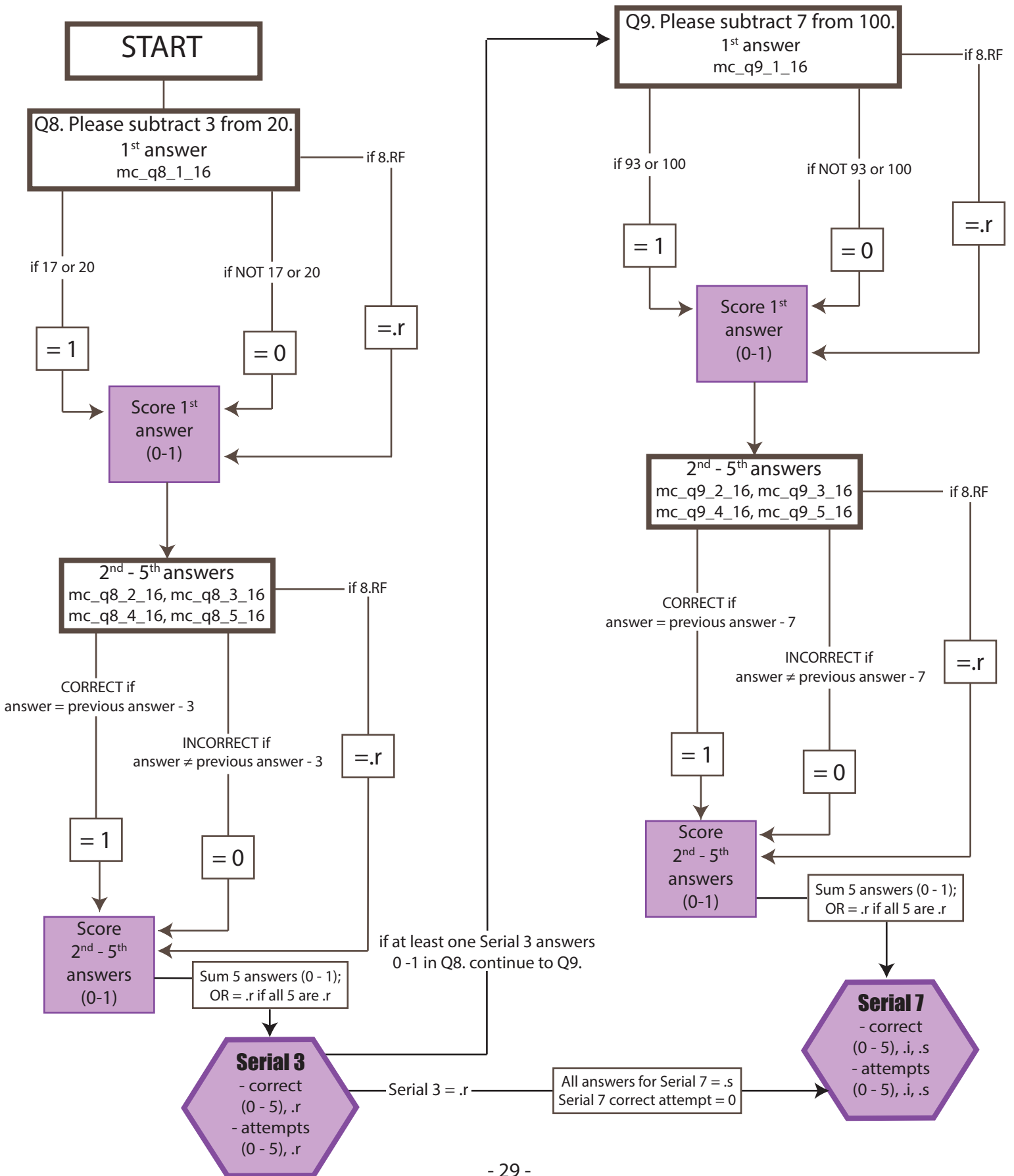


Correct = { Sum (correct out of 83 points if ≠ .l, .i, .r, .c, .s, .m)
.l if all items are .l .r if all items are .r .c if all items are .c
.i if all items are .i .s if all items are .s .m if all items are .m

Attempts = { Sum (maximum out of 83 points if ≠ .l, .i, .r, .c, .s, .m)
.l if all items are .l .r if all items are .r .c if all items are .c
.i if all items are .i .s if all items are .s .m if all items are .m

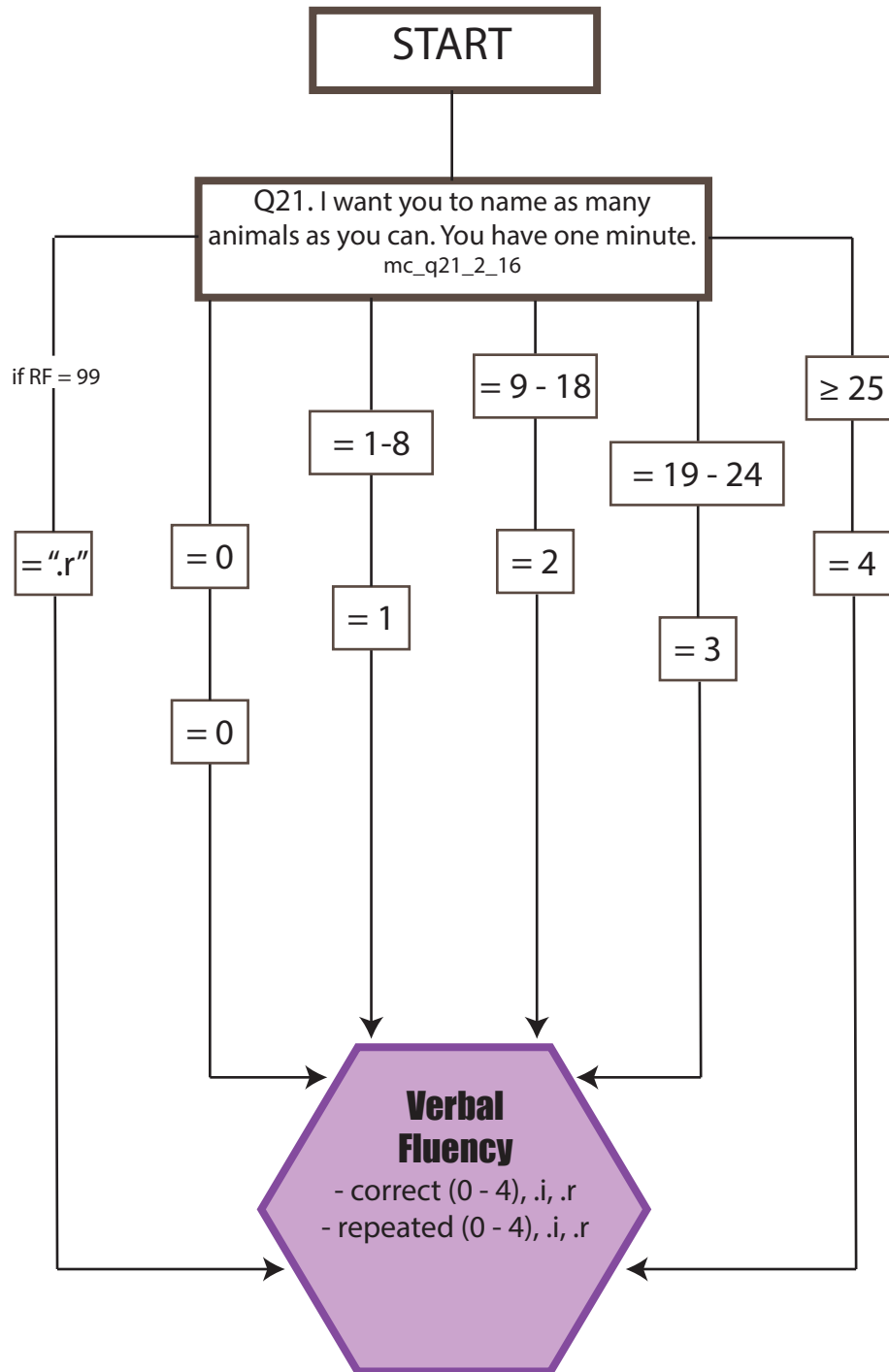
D7.1-2 SERIAL 3 & 7 SCORE FLOW CHART

n = 2,042



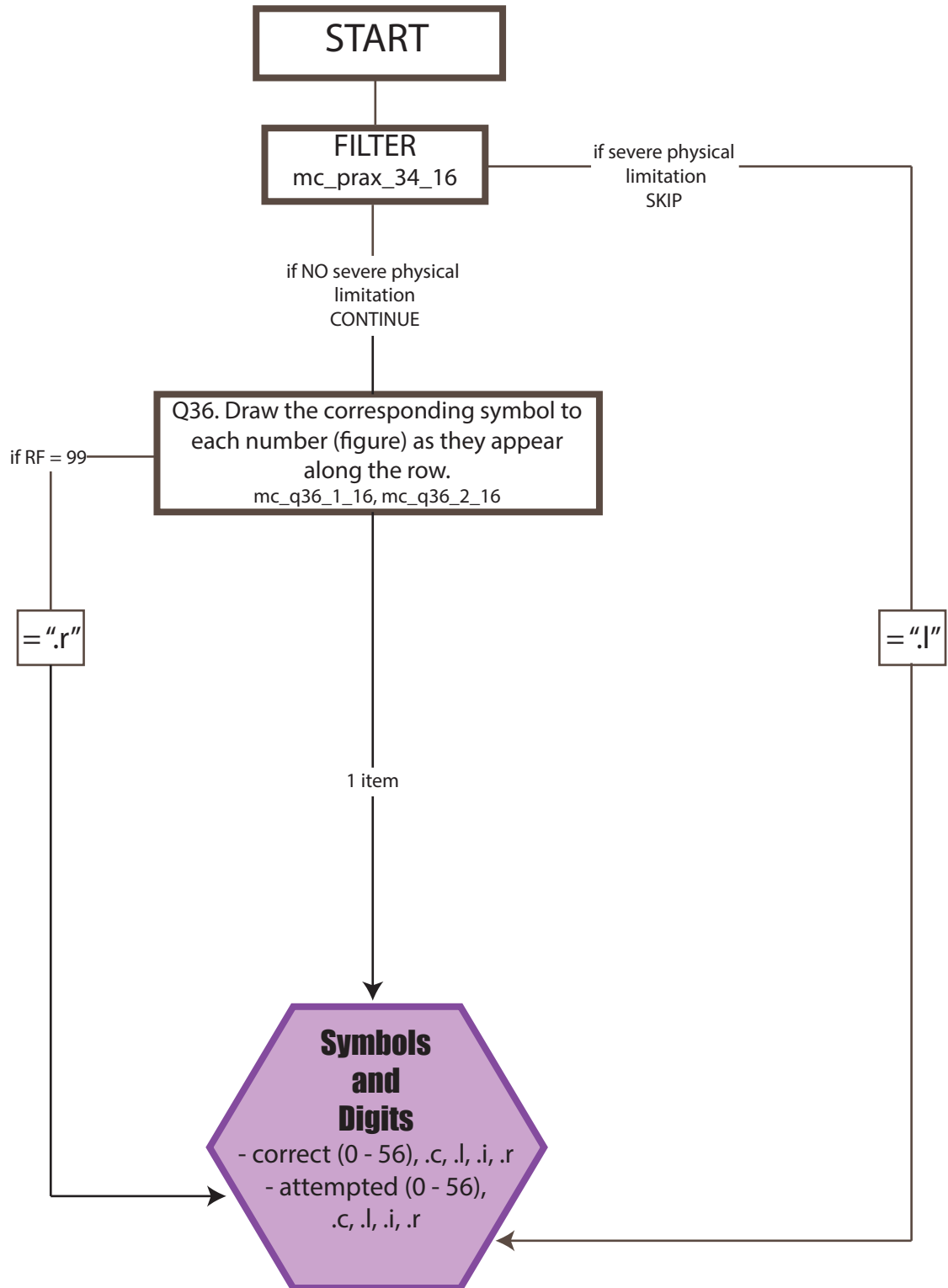
D7.3 VERBAL FLUENCY SCORE FLOW CHART

n = 2,039



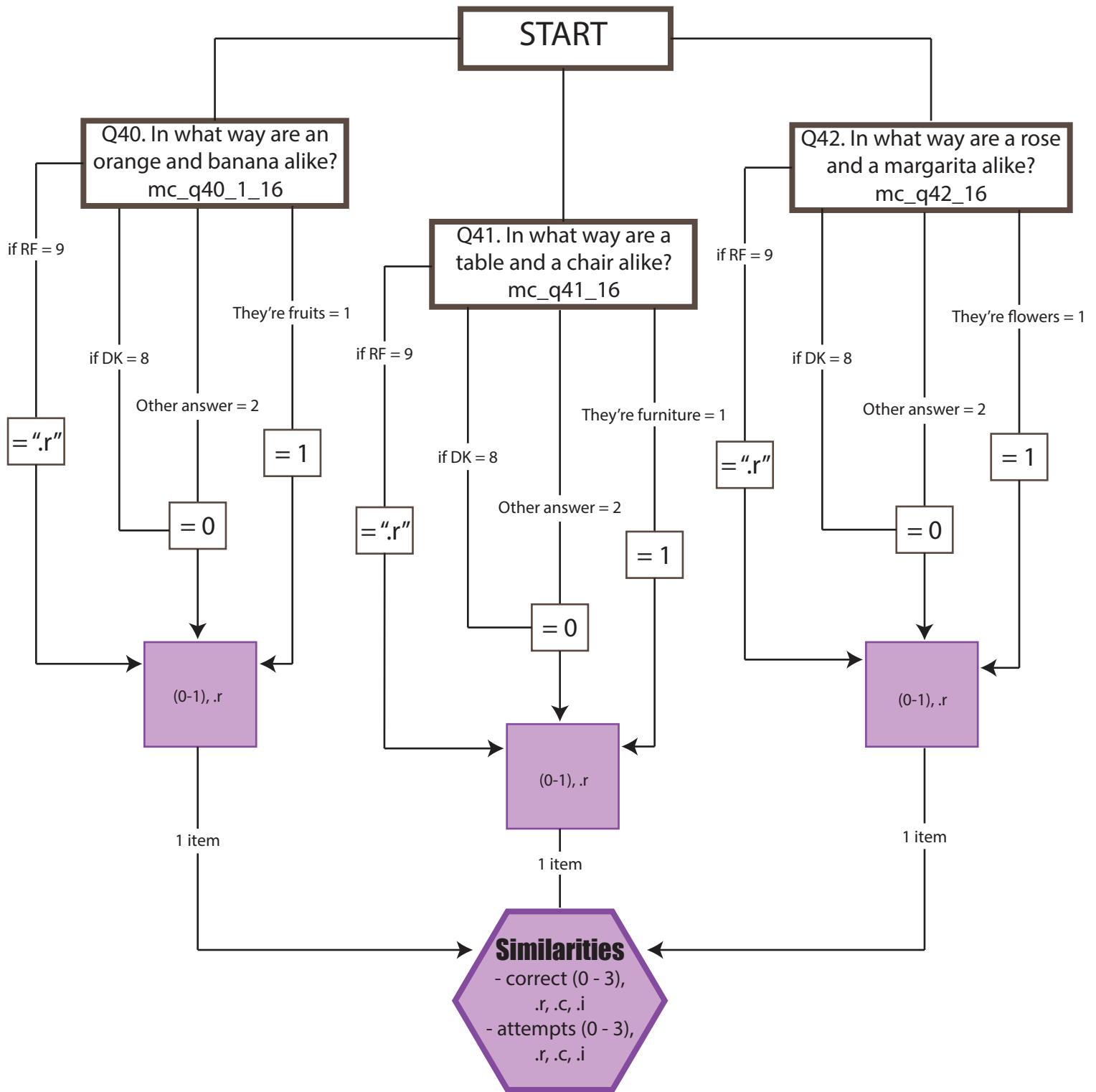
D7.4 SYMBOLS AND DIGITS SCORE FLOW CHART

n = 1,872



D7.5 SIMILARITIES SCORE FLOW CHART

n = 1,922



D7.6 GO - NO - GO SCORE FLOW CHART

n = 1,904

